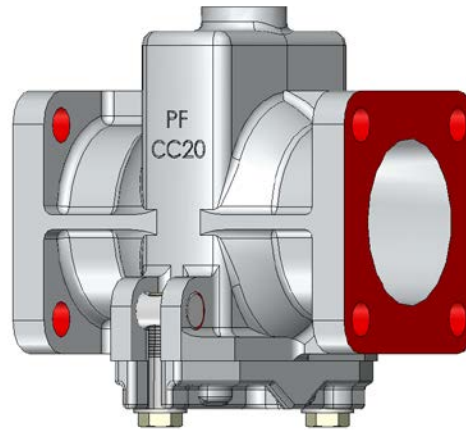
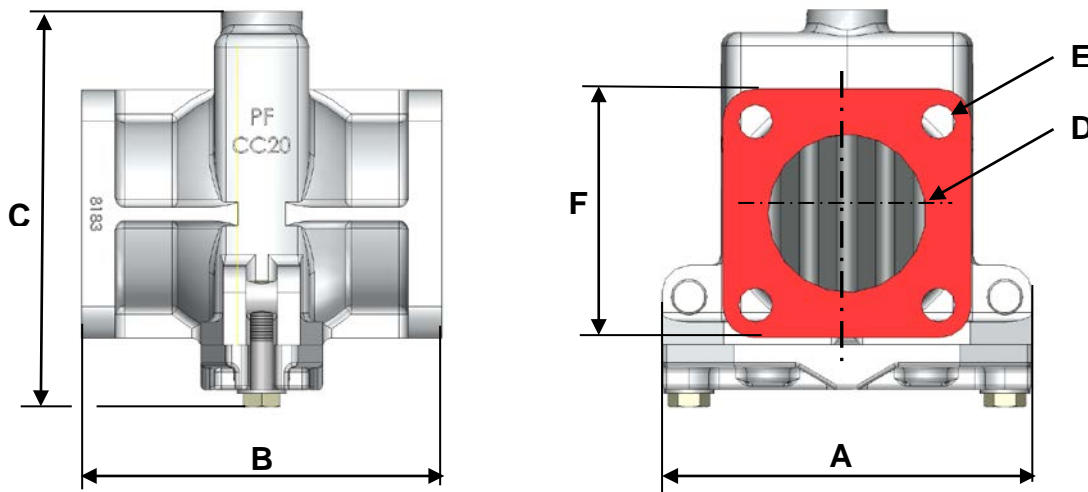


Replaces
PF 70 CC10
Effective 18 01 25



CHARACTERISTICS

		STANDARD	AVAILABLE OPTIONS
Filtration		<ul style="list-style-type: none"> • Grid bored 4 mm part of the cover. • Grid bored 0.5 mm removable 	
Flanges		Standard MOUVEX compatible with pump CC10 24	
Cover sealing		O-ring	
Flanges sealing		Gasket	
Cover fixation		Rotating bolts	
Draining		Without	
Volume		0.94 litre	
Dimensions mm (in.)	A	164 (6.46)	
	B	160 (6.30)	
	C	178 (7)	
	D	Ø70 (2.76)	
	E	4 X Ø15 (0.59) on Ø115 (4.53)	
	F	110 X 110 (4.33)	
Weight kg (lbs)		Aluminium : 2.3 (4.4)	



Replaces
PF 70 CC10
Effective 18 01 25

OPERATING LIMITS

	STANDARD MATERIALS
Minimum temperature °C (°F)	-10 (14)
Maximum temperature °C (°F)	80 (176)
Maximum working pressure bar (psi)	2 (29)

MATERIALS OF CONSTRUCTION

Part No	PART NAME	STANDARD MATERIALS	AVAILABLE
4	Casing	Aluminium	
5	Cover	Aluminium	
6	Grilles	Steel	Stainless Steel
8	Bolts	Steel	
131	Flange gasket	Fiber	
7	Cover O-ring	FKM	

