



P.L. : 1401-W01

Effective  
Replaces

April 2017  
June 2015

**PARTS LIST**  
**DIRECT DRIVE PACKAGES LS DDNC**  
**TYPHON II - MISTRAL - B600**

Keep this parts lists with Installation, Operation and Maintenance Instructions.

To order the required spare parts, indicate the desired Reference(s).

- ◆ Sets of parts or parts available to order.

**COMPRESSOR : See PL Compressor**

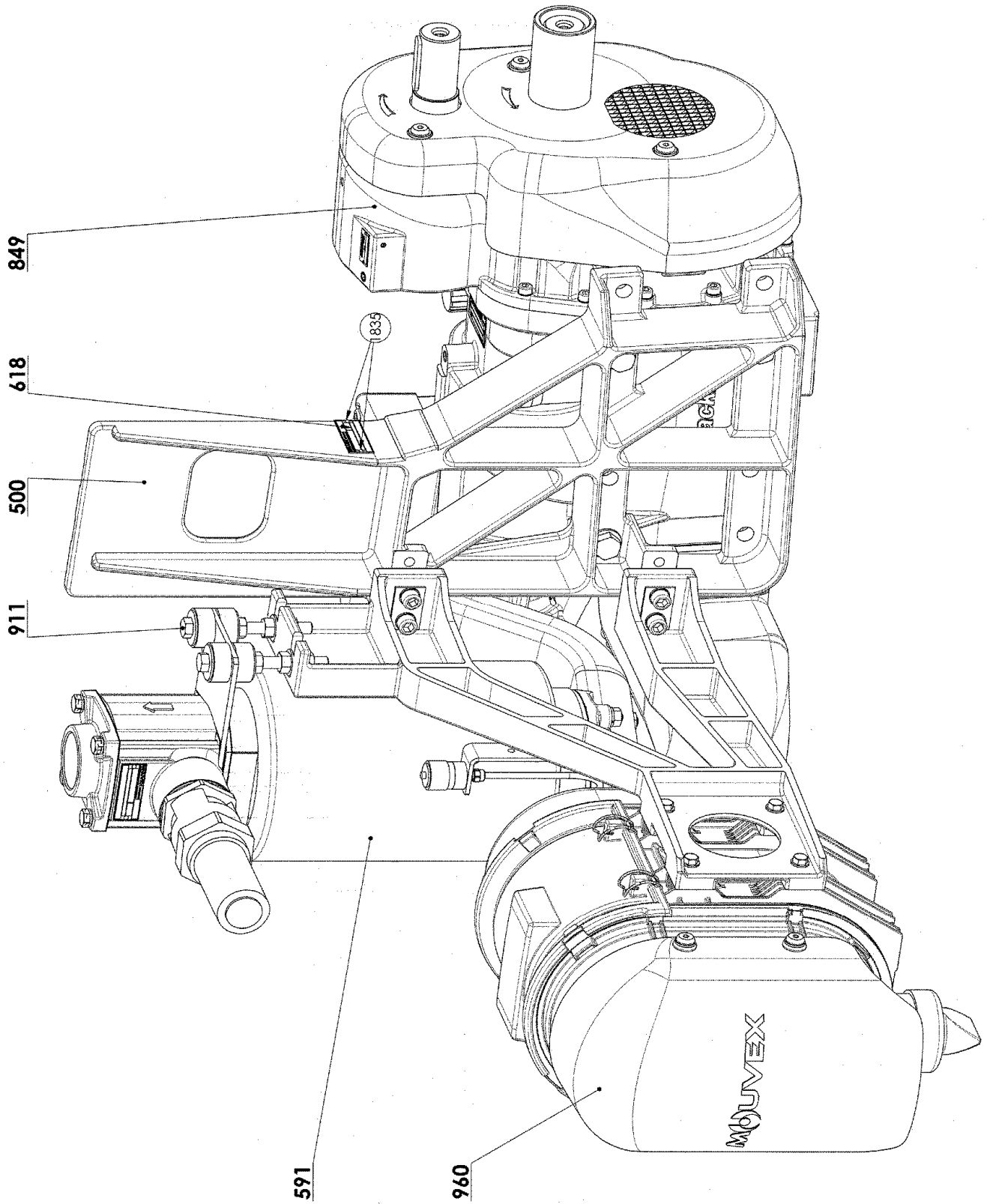
**DISASSEMBLING THE COMPRESSOR IS FORBIDDEN AND VOIDS THE WARRANTY.**  
**IF A REPAIRING IS NEEDED, THE COMPRESSOR MUST BE RETURNED TO OUR WORKSHOP.**  
**THE ITEMS SPECIFIED ON THAT PARTS LIST WHICH HAVE NOT REFERENCE CANNOT BE SUPPLIED AS SPARE PARTS.**

Z.I. la Plaine des Isles - 2 rue des Caillottes F-89000 AUXERRE - France

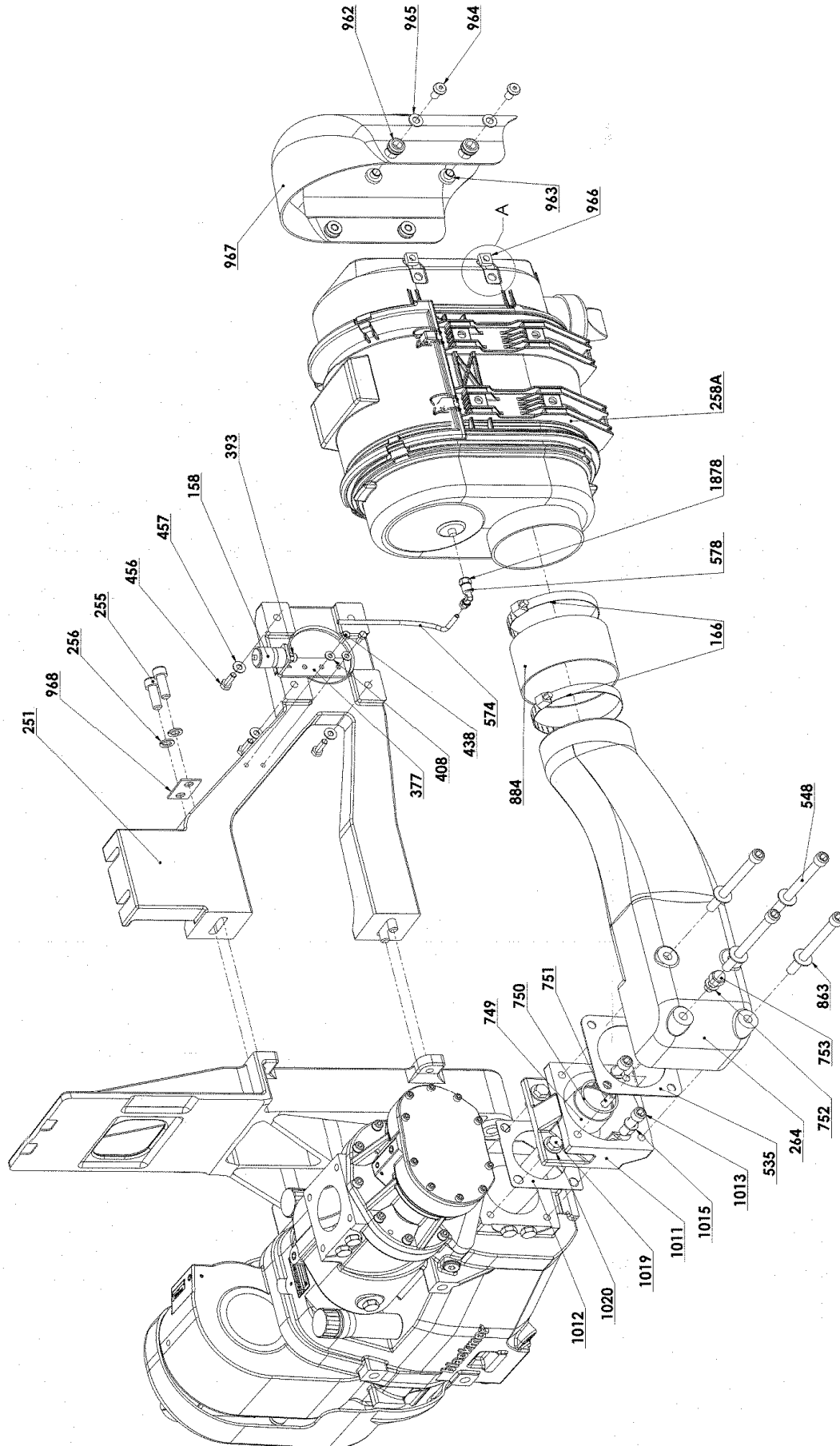
Tel : +33 (0)3 86 49 86 30 • Fax : +33 (0)3 86 49 87 17

contact@mouvex.com • www.mouvex.com

# DIRECT DRIVE PACKAGES LS DDNC

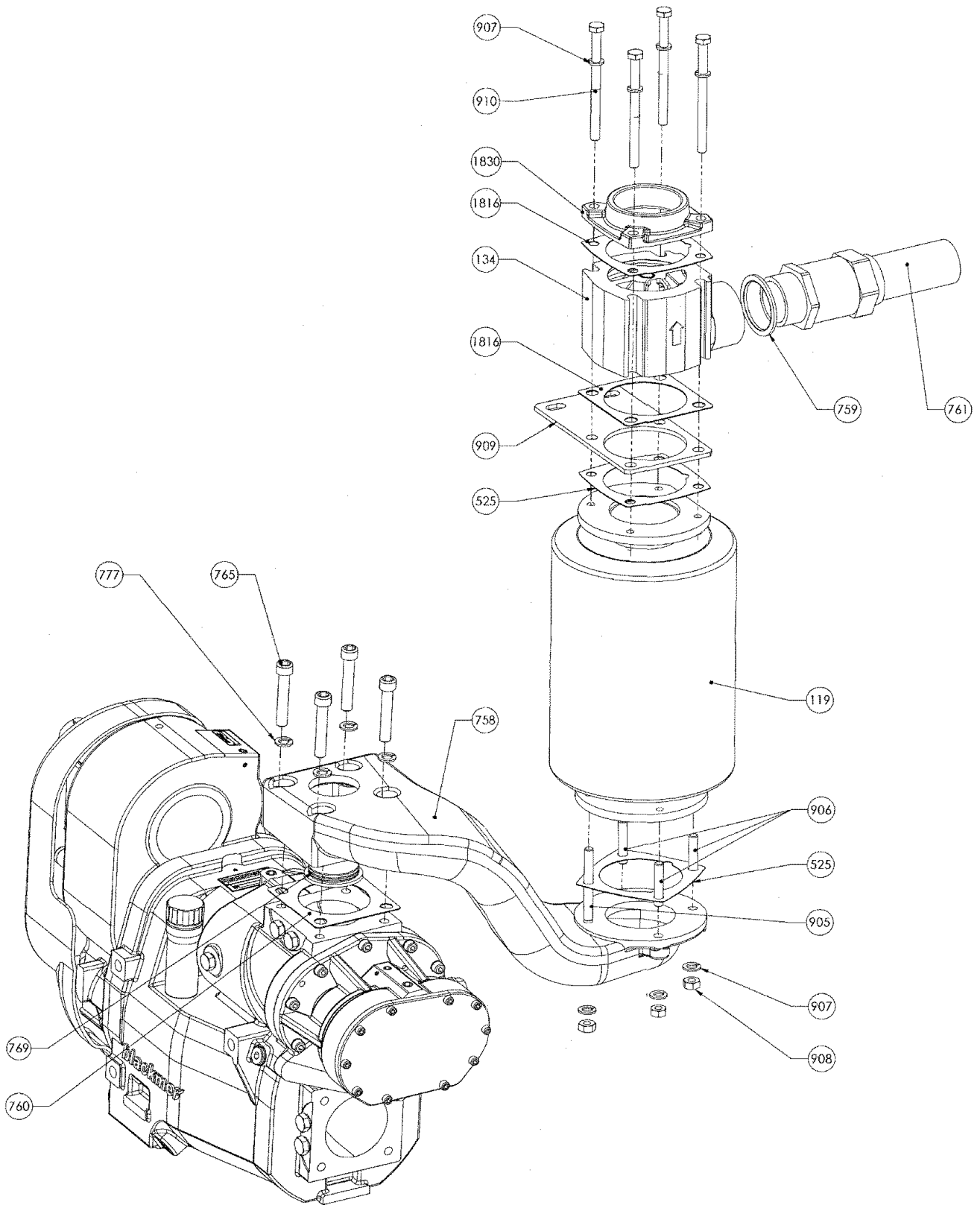


# LS-DDNC SUCTION ASSEMBLY



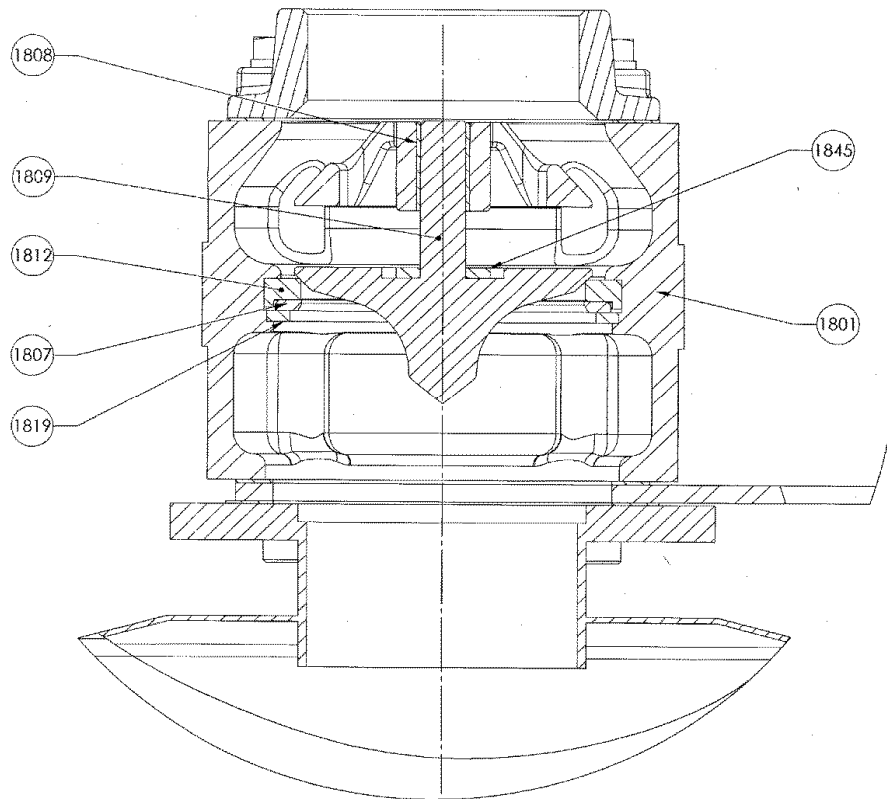
# ACCESSORIES

## Check and relief valve - Silencer

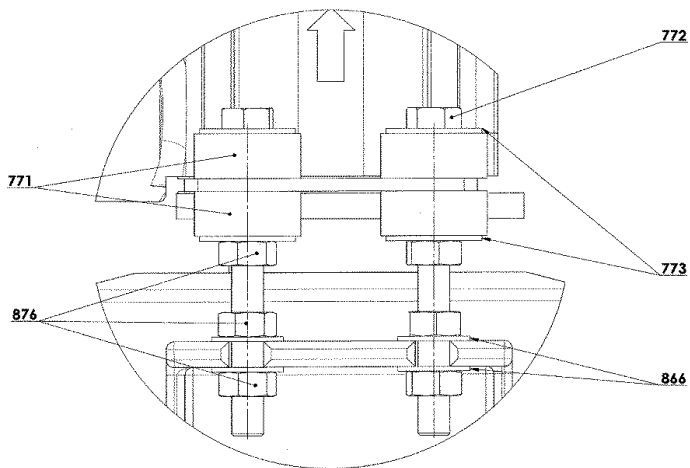


# ACCESSORIES

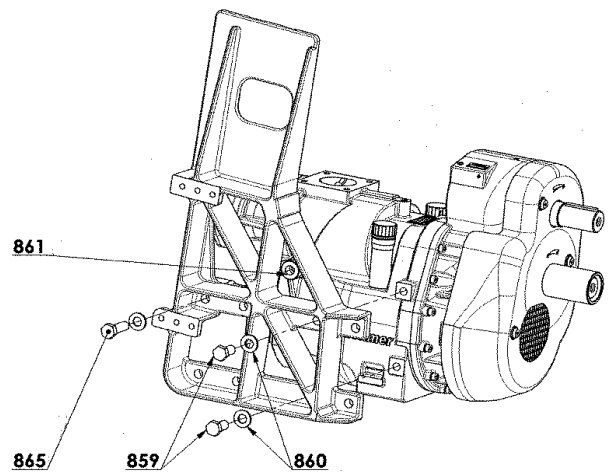
## Check and relief valve



## Vibration pad



## Fastening kit



## TYPHON II LS DDNC

\* 1, 2, 4... : Quantity in equipment - (1), (2), (4)... : Quantity in kit

Item	Available	Description	Qty*	Ref.	Maintenance kit
124	◆	COMPLETE TORQUE LIMITER 950 NM	1	312548.03	■
124	◆	COMPLETE TORQUE LIMITER 800 NM	1	317145.00	■
500	◆	HOLDER LS DDNC	1	225865	
591	◆	LS DDNC CHECK VALVE SILENCER ASSEMBLY	1	314662.03	
119	◆	SILENCER	1	230485	
134	◆	CHECK RELIEF VALVE LSDDNC	1	314659.00	
1801		CHECK VALVE CASING	(1)		
1807		CHECK VALVE SEAT	(1)		
1808		BUSH	(1)		
1809		VALVE	(1)		
1812		SEAL	(1)		
1816	◆	GASKET	2	219281	■
1819		CIRCLIPS	(1)		
1830	◆	FLANGE 2.5" BSP	1	227439	
1845		WASHER	(1)		
525	◆	GASKET	2	219281	
758		SILENCER CONNECTOR	(1)		
760	◆	GASKET	1	219281	
765		SCREW	(4)		
769		PLUG	(1)		
777		WASHER	(4)		
905		STUD	(1)		
906		STUD	(3)		
907		WASHER	(8)		
908		NUT	(4)		
909		BRACKET	(1)		
910		SCREW	(4)		
778	◆	COMPLETE RELIEF VALVE 2.3 BAR	1	313494.00	■
778	◆	COMPLETE RELIEF VALVE 2 BAR	1	313477.00	■
759		SEAL WASHER	(1)		
761		RELIEF VALVE	(1)		
849	◆	TYPHON II N 13R/15L-	1	514572.01	
849	◆	TYPHON II N 19R/22L-	1	516275.01	
849	◆	TYPHON II N 20R-	1	514563.01	
849	◆	TYPHON II N 30R-	1	514565.01	
911	◆	VIBRATION PADS ASSEMBLY	2	314673.00	
771	◆	VIBRATION PAD	2	222943	■
772		SCREW	(1)		
773		WASHER	(2)		
866		WASHER	(2)		
876		NUT	(3)		
1213	◆	FASTENING KIT	1	315060.00	
859		SCREW	(4)		
860		WASHER	(4)		

## TYPHON II LS DDNC

\* 1, 2, 4... : Quantity in equipment - (1), (2), (4)... : Quantity in kit

Item	Available	Description	Qty*	Ref.	Maintenance kit
776	◆	TYPHON II LS-DDNC SUCTION ASSEMBLY	1	314668.01	
864	◆	LS-DDNC SUCTION ASSEMBLY	1	314665.01	
166		HOSE CLAMP	(2)		
251	◆	BRACKET	1	225864	
255		SCREW	(4)		
256		WASHER	(4)		
258A	◆	POWERCORE FILTER	1	225619	
456		SCREW	(4)		
457		WASHER	(4)		
588	◆	RESTRICTION INDICATOR ASSEMBLY	1	314669.00	
158	◆	RESTRICTION INDICATOR	1	215658	■
377		BRACKET	(1)		
393		CONNECTOR	(1)		
408	◆	WASHER	2	211354	
438		SCREW	(2)		
574		HOSE	(1)		
578		ELBOW 90°	(1)		
1878		ADAPTATER	(1)		
884		RUBBER STRAIGHT HUMP	(1)		
960	◆	SUCTION COVER ASSEMBLY	1	315087.01	
961	◆	SUCTION COVER FASTENING ASSEMBLY	1	315086.00	
962		RUBBER RING	(4)		
963		SPACER	(4)		
964		SCREW	(4)		
965		WASHER	(4)		
966		NUT	(4)		
967		SUCTION COVER	(1)		
968		PLATE	(2)		
997	◆	CONNECTION KIT	1	314670.00	
264		FILTER ELBOW	(1)		
535	◆	GASKET	1	215088	■
548		SCREW	(4)		
749		SILENCER	(1)		
750	◆	SEAL	1	206692	
751	◆	STUD	1	217239	
752		WASHER	(1)		
753		BLIND NUT	(1)		
863		WASHER	(4)		

## TYPHON II LS DDNC

\* 1, 2, 4... : Quantity in equipment - (1), (2), (4)... : Quantity in kit

Item	Available	Description	Qty*	Ref.	Maintenance kit	Wear part
124	◆	COMPLETE TORQUE LIMITER 950 NM	1	312548.03	■	●
124	◆	COMPLETE TORQUE LIMITER 800 NM	1	317145.00	■	●
500	◆	HOLDER LS DDNC	1	225865		
591	◆	LS DDNC CHECK VALVE SILENCER ASSEMBLY	1	314662.03		
119	◆	SILENCER	1	230485		
134	◆	CHECK RELIEF VALVE LSDDNC	1	314659.00		
1801		CHECK VALVE CASING	(1)			
1807		CHECK VALVE SEAT	(1)			
1808		BUSH	(1)			
1809		VALVE	(1)			
1812		SEAL	(1)			
1816	◆	GASKET	2	219281	■	
1819		CIRCLIPS	(1)			
1830	◆	FLANGE 2.5" BSP	1	227439		
1845		WASHER	(1)			
525	◆	GASKET	2	219281		
758		SILENCER CONNECTOR	(1)			
760	◆	GASKET	1	219281		
765		SCREW	(4)			
769		PLUG	(1)			
777		WASHER	(4)			
905		STUD	(1)			
906		STUD	(3)			
907		WASHER	(8)			
908		NUT	(4)			
909		BRACKET	(1)			
910		SCREW	(4)			
778	◆	COMPLETE RELIEF VALVE 2.3 BAR	1	313494.00	■	
778	◆	COMPLETE RELIEF VALVE 2 BAR	1	313477.00	■	
759		SEAL WASHER	(1)			
761		RELIEF VALVE	(1)			●
849	◆	TYPHON II N 13R/15L-	1	514572.01		
849	◆	TYPHON II N 19R/22L-	1	516275.01		
849	◆	TYPHON II N 20R-	1	514563.01		
849	◆	TYPHON II N 30R-	1	514565.01		
911	◆	VIBRATION PADS ASSEMBLY	2	314673.00		
771	◆	VIBRATION PAD	2	222943	■	●
772		SCREW	(1)			
773		WASHER	(2)			
866		WASHER	(2)			
876		NUT	(3)			
1213	◆	FASTENING KIT	1	315060.00		
859		SCREW	(4)			
860		WASHER	(4)			



## TYPHON II LS DDNC

\* 1, 2, 4... : Quantity in equipment - (1), (2), (4)... : Quantity in kit

Item	Available	Description	Qty*	Ref.	Maintenance kit	Wear part
776	◆	TYPHON II LS-DDNC SUCTION ASSEMBLY	1	314668.01		
864	◆	LS-DDNC SUCTION ASSEMBLY	1	314665.01		
166		HOSE CLAMP	(2)			
251	◆	BRACKET	1	225864		
255		SCREW	(4)			
256		WASHER	(4)			
258A	◆	POWERCORE FILTER	1	225619		
456		SCREW	(4)			
457		WASHER	(4)			
588	◆	RESTRICTION INDICATOR ASSEMBLY	1	314669.00		
158	◆	RESTRICTION INDICATOR	1	215658	■	
377		BRACKET	(1)			
393		CONNECTOR	(1)			
408	◆	WASHER	2	211354		
438		SCREW	(2)			
574		HOSE	(1)			
578		ELBOW 90°	(1)			
1878		ADAPTATER	(1)			
884		RUBBER STRAIGHT HUMP	(1)			
960	◆	SUCTION COVER ASSEMBLY	1	315087.01		
961	◆	SUCTION COVER FASTENING ASSEMBLY	1	315086.00		
962		RUBBER RING	(4)			
963		SPACER	(4)			
964		SCREW	(4)			
965		WASHER	(4)			
966		NUT	(4)			
967		SUCTION COVER	(1)			
968		PLATE	(2)			
997	◆	CONNECTION KIT	1	314670.00		
264		FILTER ELBOW	(1)			
535	◆	GASKET	1	215088	■	
548		SCREW	(4)			
749		SILENCER	(1)			
750	◆	SEAL	1	206692		
751	◆	STUD	1	217239		
752		WASHER	(1)			
753		BLIND NUT	(1)			
863		WASHER	(4)			

# MISTRAL LS DDNC

\* 1, 2, 4... : Quantity in equipment - (1), (2), (4)... : Quantity in kit

Item	Available	Description	Qty*	Ref.	Maintenance kit
124	◆	COMPLETE TORQUE LIMITER 800 NM	1	317145.00	■
500	◆	HOLDER LS DDNC	1	225865	
591	◆	LS DDNC CHECK VALVE SILENCER ASSEMBLY	1	314662.03	
119	◆	SILENCER	1	230485	
134	◆	CHECK RELIEF VALVE LSDDNC	1	314659.00	
1801		CHECK VALVE CASING	(1)		
1807		CHECK VALVE SEAT	(1)		
1808		BUSH	(1)		
1809		VALVE	(1)		
1812		SEAL	(1)		
1816	◆	GASKET	2	219281	■
1819		CIRCLIPS	(1)		
1830	◆	FLANGE 2.5" BSP	1	227439	
1845		WASHER	(1)		
525	◆	GASKET	2	219281	
758		SILENCER CONNECTOR	(1)		
760	◆	GASKET	1	219281	
765		SCREW	(4)		
769		PLUG	(1)		
777		WASHER	(4)		
905		STUD	(1)		
906		STUD	(3)		
907		WASHER	(8)		
908		NUT	(4)		
909		BRACKET	(1)		
910		SCREW	(4)		
778	◆	COMPLETE RELIEF VALVE 2.3 BAR	1	313494.00	■
778	◆	COMPLETE RELIEF VALVE 2 BAR	1	313477.00	■
759		SEAL WASHER	(1)		
761		RELIEF VALVE	(1)		
849	◆	MISTRAL N 13R/15L-	1	514604.02	
849	◆	MISTRAL N 19R/22L-	1	516276.02	
849	◆	MISTRAL N 20R-	1	512642.02	
849	◆	MISTRAL N 30R-	1	512866.02	
911	◆	VIBRATION PADS ASSEMBLY	2	314673.00	
771	◆	VIBRATION PAD	2	222943	■
772		SCREW	(1)		
773		WASHER	(2)		
866		WASHER	(2)		
876		NUT	(3)		
1213	◆	FASTENING KIT	1	315060.00	
859		SCREW	(4)		
860		WASHER	(4)		

## MISTRAL LS DDNC

\* 1, 2, 4... : Quantity in equipment - (1), (2), (4)... : Quantity in kit

Item	Available	Description	Qty*	Ref.	Maintenance kit
<b>776</b>	◆	<b>MISTRAL LS-DDNC SUCTION ASSEMBLY</b>	<b>1</b>	<b>314667.01</b>	
864	◆	LS-DDNC SUCTION ASSEMBLY	1	314665.01	
166		HOSE CLAMP	(2)		
251	◆	BRACKET	1	225864	
255		SCREW	(4)		
256		WASHER	(4)		
258A	◆	POWERCORE FILTER	1	225619	
456		SCREW	(4)		
457		WASHER	(4)		
588	◆	RESTRICTION INDICATOR ASSEMBLY	1	314669.00	
158	◆	RESTRICTION INDICATOR	1	215658	■
377		BRACKET	(1)		
393		CONNECTOR	(1)		
408	◆	WASHER	2	211354	
438		SCREW	(2)		
574		HOSE	(1)		
578		ELBOW 90°	(1)		
1878		ADAPTATER	(1)		
884		RUBBER STRAIGHT HUMP	(1)		
960	◆	SUCTION COVER ASSEMBLY	1	315087.01	
961	◆	SUCTION COVER FASTENING ASSEMBLY	1	315086.00	
962		RUBBER RING	(4)		
963		SPACER	(4)		
964		SCREW	(4)		
965		WASHER	(4)		
966		NUT	(4)		
967		SUCTION COVER	(1)		
968		PLATE	(2)		
997	◆	CONNECTION KIT	1	314672.00	
264		FILTER ELBOW	(1)		
535	◆	GASKET	1	215088	■
548		SCREW	(4)		
749		SILENCER	(1)		
750	◆	SEAL	1	206692	
751	◆	STUD	1	217239	
752		WASHER	(1)		
753		BLIND NUT	(1)		
863		WASHER	(4)		
1011	◆	SPACER FLANGE MISTRAL	1	223059	
1012	◆	GASKET	1	219281	■
1013		SCREW	(2)		
1015		WASHER	(2)		
1019		SCREW	(2)		
1020		WASHER	(2)		

# MISTRAL LS DDNC

\* 1, 2,4... : Quantity in equipment - (1), (2), (4)... : Quantity in kit

Item	Available	Description	Qty*	Ref.	Maintenance kit	Wear part
124	◆	COMPLETE TORQUE LIMITER 800 NM	1	317145.00	■	●
500	◆	HOLDER LS DDNC	1	225865		
591	◆	LS DDNC CHECK VALVE SILENCER ASSEMBLY	1	314662.03		
119	◆	SILENCER	1	230485		
134	◆	CHECK RELIEF VALVE LSDDNC	1	314659.00		
1801		CHECK VALVE CASING	(1)			
1807		CHECK VALVE SEAT	(1)			
1808		BUSH	(1)			
1809		VALVE	(1)			
1812		SEAL	(1)			
1816	◆	GASKET	2	219281	■	
1819		CIRCLIPS	(1)			
1830	◆	FLANGE 2.5" BSP	1	227439		
1845		WASHER	(1)			
525	◆	GASKET	2	219281		
758		SILENCER CONNECTOR	(1)			
760	◆	GASKET	1	219281		
765		SCREW	(4)			
769		PLUG	(1)			
777		WASHER	(4)			
905		STUD	(1)			
906		STUD	(3)			
907		WASHER	(8)			
908		NUT	(4)			
909		BRACKET	(1)			
910		SCREW	(4)			
778	◆	COMPLETE RELIEF VALVE 2.3 BAR	1	313494.00	■	
778	◆	COMPLETE RELIEF VALVE 2 BAR	1	313477.00	■	
759		SEAL WASHER	(1)			
761		RELIEF VALVE	(1)			●
849	◆	MISTRAL N 13R/15L-	1	514604.02		
849	◆	MISTRAL N 19R/22L-	1	516276.02		
849	◆	MISTRAL N 20R-	1	512642.02		
849	◆	MISTRAL N 30R-	1	512866.02		
911	◆	VIBRATION PADS ASSEMBLY	2	314673.00		
771	◆	VIBRATION PAD	2	222943	■	●
772		SCREW	(1)			
773		WASHER	(2)			
866		WASHER	(2)			
876		NUT	(3)			
1213	◆	FASTENING KIT	1	315060.00		
859		SCREW	(4)			
860		WASHER	(4)			

# MISTRAL LS DDNC

\* 1, 2, 4... : Quantity in equipment - (1), (2), (4)... : Quantity in kit

Item	Available	Description	Qty*	Ref.	Maintenance kit	Wear part
776	◆	MISTRAL LS-DDNC SUCTION ASSEMBLY	1	314667.01		
864	◆	LS-DDNC SUCTION ASSEMBLY	1	314665.01		
166		HOSE CLAMP	(2)			
251	◆	BRACKET	1	225864		
255		SCREW	(4)			
256		WASHER	(4)			
258A	◆	POWERCORE FILTER	1	225619		
456		SCREW	(4)			
457		WASHER	(4)			
588	◆	RESTRICTION INDICATOR ASSEMBLY	1	314669.00		
158	◆	RESTRICTION INDICATOR	1	215658	■	
377		BRACKET	(1)			
393		CONNECTOR	(1)			
408	◆	WASHER	2	211354		
438		SCREW	(2)			
574		HOSE	(1)			
578		ELBOW 90°	(1)			
1878		ADAPTATER	(1)			
884		RUBBER STRAIGHT HUMP	(1)			
960	◆	SUCTION COVER ASSEMBLY	1	315087.01		
961	◆	SUCTION COVER FASTENING ASSEMBLY	1	315086.00		
962		RUBBER RING	(4)			
963		SPACER	(4)			
964		SCREW	(4)			
965		WASHER	(4)			
966		NUT	(4)			
967		SUCTION COVER	(1)			
968		PLATE	(2)			
997	◆	CONNECTION KIT	1	314672.00		
264		FILTER ELBOW	(1)			
535	◆	GASKET	1	215088	■	
548		SCREW	(4)			
749		SILENCER	(1)			
750	◆	SEAL	1	206692		
751	◆	STUD	1	217239		
752		WASHER	(1)			
753		BLIND NUT	(1)			
863		WASHER	(4)			
1011	◆	SPACER FLANGE MISTRAL	1	223059		
1012	◆	GASKET	1	219281	■	
1013		SCREW	(2)			
1015		WASHER	(2)			
1019		SCREW	(2)			
1020		WASHER	(2)			

## B600 LS DDNC

\* 1, 2, 4... : Quantity in equipment - (1), (2), (4)... : Quantity in kit

Item	Available	Description	Qty*	Ref.	Maintenance kit
124	◆	COMPLETE TORQUE LIMITER 610 NM	1	311258.02	■
500	◆	HOLDER LS DDNC	1	225865	
591	◆	LS DDNC CHECK VALVE SILENCER ASSEMBLY	1	314662.03	
119	◆	SILENCER	1	230485	
134	◆	CHECK RELIEF VALVE LSDDNC	1	314659.00	
1801		CHECK VALVE CASING	(1)		
1807		CHECK VALVE SEAT	(1)		
1808		BUSH	(1)		
1809		VALVE	(1)		
1812		SEAL	(1)		
1816	◆	GASKET	2	219281	■
1819		CIRCLIPS	(1)		
1830	◆	FLANGE 2.5" BSP	1	227439	
1845		WASHER	(1)		
525	◆	GASKET	2	219281	
758		SILENCER CONNECTOR	(1)		
760	◆	GASKET	1	219281	
765		SCREW	(4)		
769		PLUG	(1)		
777		WASHER	(4)		
905		STUD	(1)		
906		STUD	(3)		
907		WASHER	(8)		
908		NUT	(4)		
909		BRACKET	(1)		
910		SCREW	(4)		
778	◆	COMPLETE RELIEF VALVE 2.3 BAR	1	313494.00	■
778	◆	COMPLETE RELIEF VALVE 2 BAR	1	313477.00	■
759		SEAL WASHER	(1)		
761		RELIEF VALVE	(1)		
849	◆	B600 N 13R/15L-	1	514589.00	
849	◆	B600 N 19R/22L-	1	516277.00	
849	◆	B600 N 20R-	1	514588.00	
849	◆	B600 N 30R-	1	514592.00	
911	◆	VIBRATION PADS ASSEMBLY	2	314673.00	
771	◆	VIBRATION PAD	2	222943	■
772		SCREW	(1)		
773		WASHER	(2)		
866		WASHER	(2)		
876		NUT	(3)		
1213	◆	FASTENING KIT	1	315061.00	
859		SCREW	(2)		
860		WASHER	(3)		
861	◆	SPACER	1	223134	
865		SCREW	(1)		

## B600 LS DDNC

\* 1, 2, 4... : Quantity in equipment - (1), (2), (4)... : Quantity in kit

Item	Available	Description	Qty*	Ref.	Maintenance kit
<b>776</b>	◆	<b>B600 LS-DDNC SUCTION ASSEMBLY</b>	<b>1</b>	<b>314666.01</b>	
864	◆	LS-DDNC SUCTION ASSEMBLY	1	314665.01	
166		HOSE CLAMP	(2)		
251	◆	BRACKET	1	225864	
255		SCREW	(4)		
256		WASHER	(4)		
258A	◆	POWERCORE FILTER	1	225619	
456		SCREW	(4)		
457		WASHER	(4)		
588	◆	RESTRICTION INDICATOR ASSEMBLY	1	314669.00	
158	◆	RESTRICTION INDICATOR	1	215658	■
377		BRACKET	(1)		
393		CONNECTOR	(1)		
408	◆	WASHER	2	211354	
438		SCREW	(2)		
574		HOSE	(1)		
578		ELBOW 90°	(1)		
1878		ADAPTATER	(1)		
884		RUBBER STRAIGHT HUMP	(1)		
960	◆	SUCTION COVER ASSEMBLY	1	315087.01	
961	◆	SUCTION COVER FASTENING ASSEMBLY	1	315086.00	
962		RUBBER RING	(4)		
963		SPACER	(4)		
964		SCREW	(4)		
965		WASHER	(4)		
966		NUT	(4)		
967		SUCTION COVER	(1)		
968		PLATE	(2)		
997	◆	CONNECTION KIT	1	314671.00	
264		FILTER ELBOW	(1)		
535	◆	GASKET	1	215088	■
548		SCREW	(4)		
749		SILENCER	(1)		
750	◆	SEAL	1	206692	
751	◆	STUD	1	217239	
752		WASHER	(1)		
753		BLIND NUT	(1)		
863		WASHER	(4)		
1011	◆	SPACER FLANGE B600	1	223058	
1012	◆	GASKET	1	219281	■
1013		SCREW	(2)		
1015		WASHER	(2)		
1019		SCREW	(2)		
1020		WASHER	(2)		

## B600 LS DDNC

\* 1, 2, 4... : Quantity in equipment - (1), (2), (4)... : Quantity in kit

Item	Available	Description	Qty*	Ref.	Maintenance kit	Wear part
124	◆	COMPLETE TORQUE LIMITER 610 NM	1	311258.02	■	●
500	◆	HOLDER LS DDNC	1	225865		
591	◆	LS DDNC CHECK VALVE SILENCER ASSEMBLY	1	314662.03		
119	◆	SILENCER	1	230485		
134	◆	CHECK RELIEF VALVE LSDDNC	1	314659.00		
1801		CHECK VALVE CASING	(1)			
1807		CHECK VALVE SEAT	(1)			
1808		BUSH	(1)			
1809		VALVE	(1)			
1812		SEAL	(1)			
1816	◆	GASKET	2	219281	■	
1819		CIRCLIPS	(1)			
1830	◆	FLANGE 2.5" BSP	1	227439		
1845		WASHER	(1)			
525	◆	GASKET	2	219281		
758		SILENCER CONNECTOR	(1)			
760	◆	GASKET	1	219281		
765		SCREW	(4)			
769		PLUG	(1)			
777		WASHER	(4)			
905		STUD	(1)			
906		STUD	(3)			
907		WASHER	(8)			
908		NUT	(4)			
909		BRACKET	(1)			
910		SCREW	(4)			
778	◆	COMPLETE RELIEF VALVE 2.3 BAR	1	313494.00	■	
778	◆	COMPLETE RELIEF VALVE 2 BAR	1	313477.00	■	
759		SEAL WASHER	(1)			
761		RELIEF VALVE	(1)			●
849	◆	B600 N 13R/15L-	1	514589.00		
849	◆	B600 N 19R/22L-	1	516277.00		
849	◆	B600 N 20R-	1	514588.00		
849	◆	B600 N 30R-	1	514592.00		
911	◆	VIBRATION PADS ASSEMBLY	2	314673.00		
771	◆	VIBRATION PAD	2	222943	■	●
772		SCREW	(1)			
773		WASHER	(2)			
866		WASHER	(2)			
876		NUT	(3)			
1213	◆	FASTENING KIT	1	315061.00		
859		SCREW	(2)			
860		WASHER	(3)			
861	◆	SPACER	1	223134		
865		SCREW	(1)			



## B600 LS DDNC

\* 1, 2, 4... : Quantity in equipment - (1), (2), (4)... : Quantity in kit

Item	Available	Description	Qty*	Ref.	Maintenance kit	Wear part
776	◆	<b>B600 LS-DDNC SUCTION ASSEMBLY</b>	1	<b>314666.01</b>		
864	◆	LS-DDNC SUCTION ASSEMBLY	1	314665.01		
166		HOSE CLAMP	(2)			
251	◆	BRACKET	1	225864		
255		SCREW	(4)			
256		WASHER	(4)			
258A	◆	POWERCORE FILTER	1	225619		
456		SCREW	(4)			
457		WASHER	(4)			
588	◆	RESTRICTION INDICATOR ASSEMBLY	1	314669.00		
158	◆	RESTRICTION INDICATOR	1	215658	■	
377		BRACKET	(1)			
393		CONNECTOR	(1)			
408	◆	WASHER	2	211354		
438		SCREW	(2)			
574		HOSE	(1)			
578		ELBOW 90°	(1)			
1878		ADAPTATER	(1)			
884		RUBBER STRAIGHT HUMP	(1)			
960	◆	SUCTION COVER ASSEMBLY	1	315087.01		
961	◆	SUCTION COVER FASTENING ASSEMBLY	1	315086.00		
962		RUBBER RING	(4)			
963		SPACER	(4)			
964		SCREW	(4)			
965		WASHER	(4)			
966		NUT	(4)			
967		SUCTION COVER	(1)			
968		PLATE	(2)			
997	◆	CONNECTION KIT	1	314671.00		
264		FILTER ELBOW	(1)			
535	◆	GASKET	1	215088	■	
548		SCREW	(4)			
749		SILENCER	(1)			
750	◆	SEAL	1	206692		
751	◆	STUD	1	217239		
752		WASHER	(1)			
753		BLIND NUT	(1)			
863		WASHER	(4)			
1011	◆	SPACER FLANGE B600	1	223058		
1012	◆	GASKET	1	219281	■	
1013		SCREW	(2)			
1015		WASHER	(2)			
1019		SCREW	(2)			
1020		WASHER	(2)			