

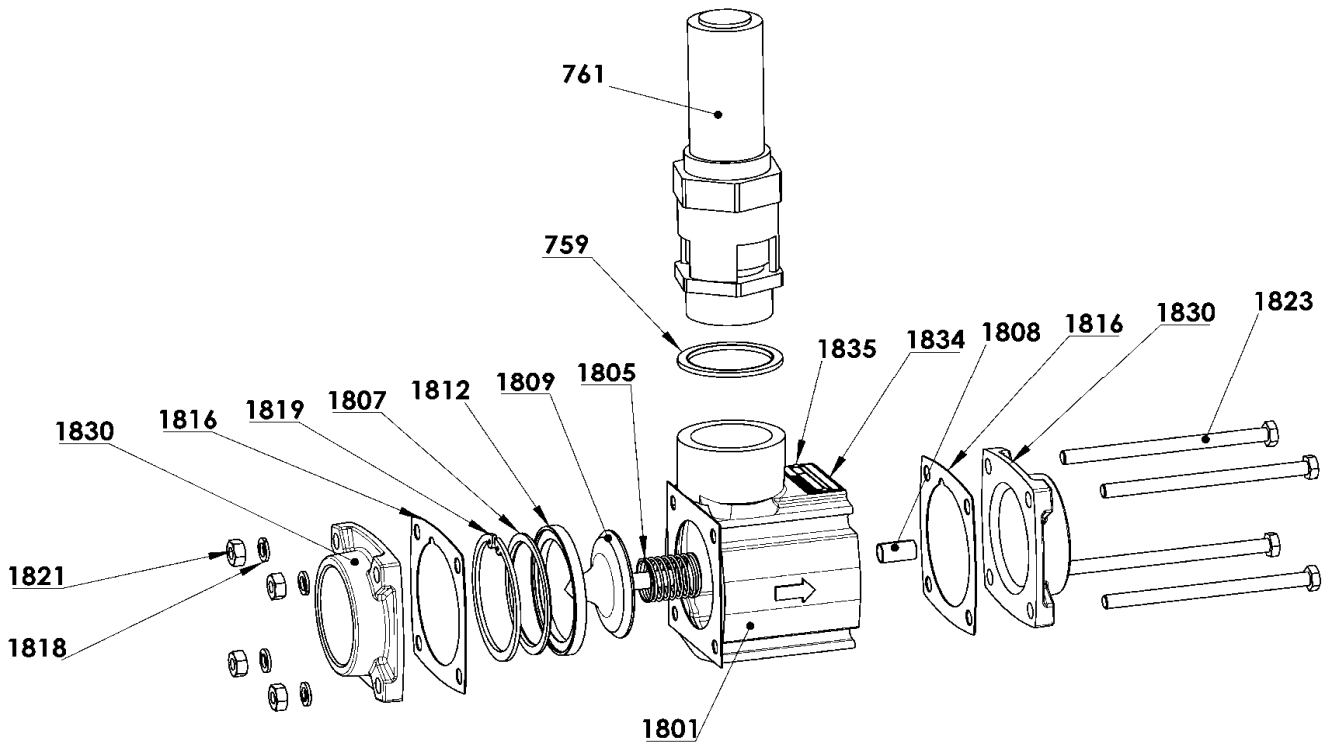
**PARTS LIST**  
**ACCESSORIES**  
**SCREW COMPRESSOR**  
**B600 - Mistral - Typhon II**

Keep this parts lists with Installation, Operation and Maintenance Instructions.

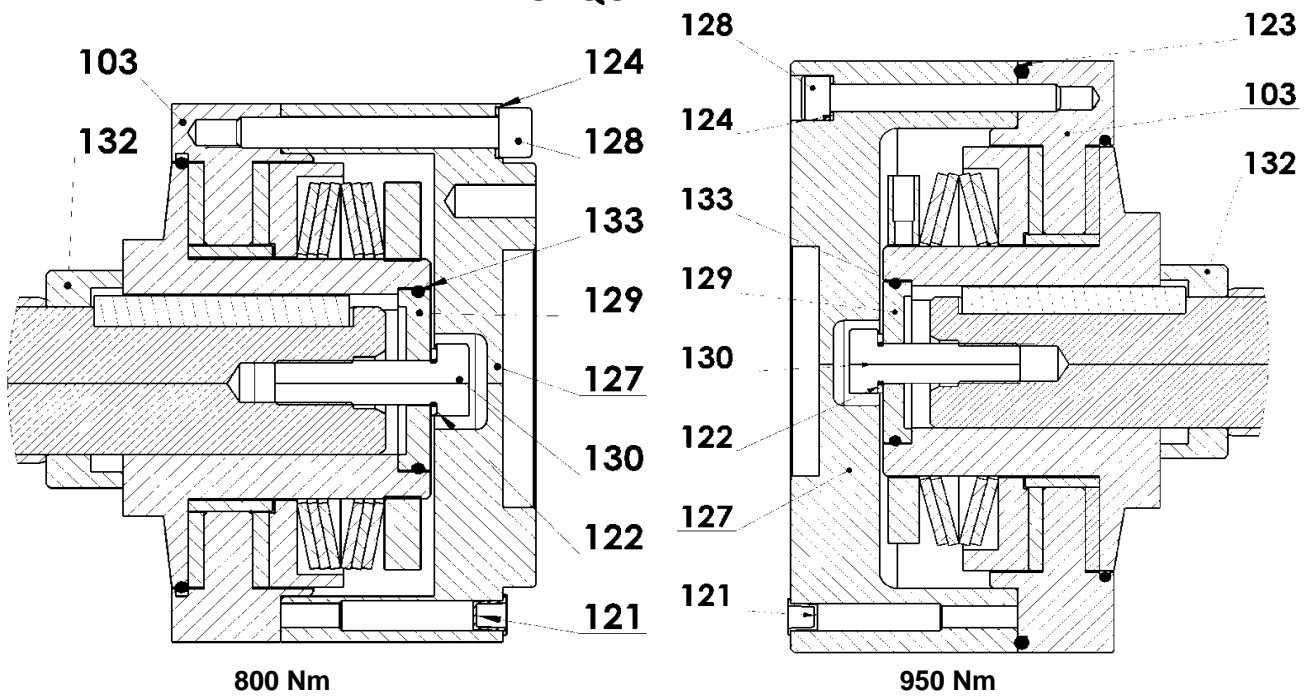
To order the required spare parts, indicate the desired Reference(s).

- ◆ Sets of parts or parts available to order.

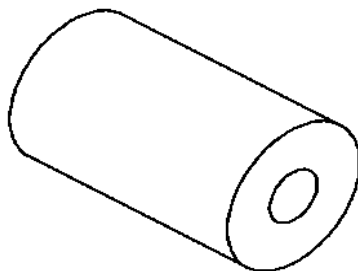
## CHECK RELIEF VALVE



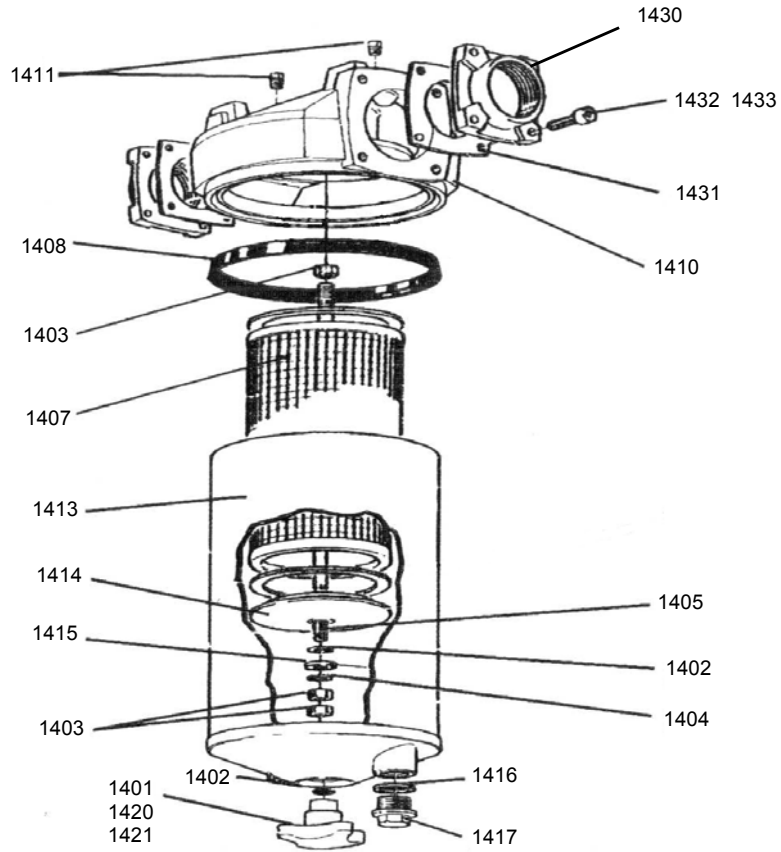
## TORQUE LIMITER



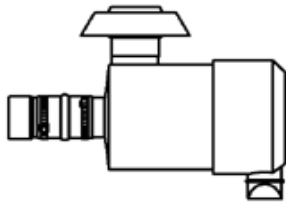
## SILENCER



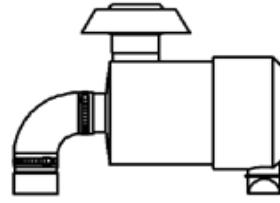
## PRESSURE LINE FILTER



## AIR FILTER

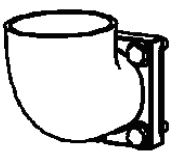


WITH STRAIGHT OUTLET ( 180° )



WITH 90° OUTLET

## FLANGE KIT & STORZ CONNECTOR KIT

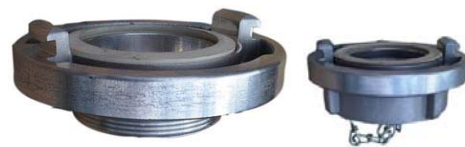


90°

FLANGE KIT

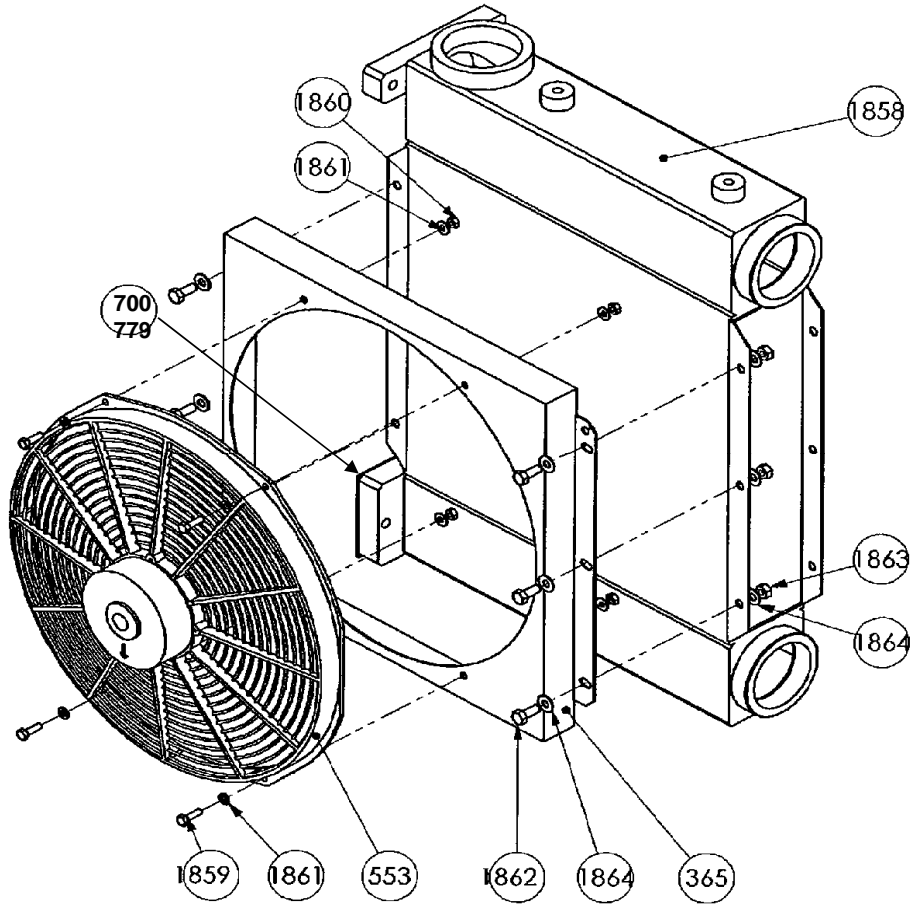


180°

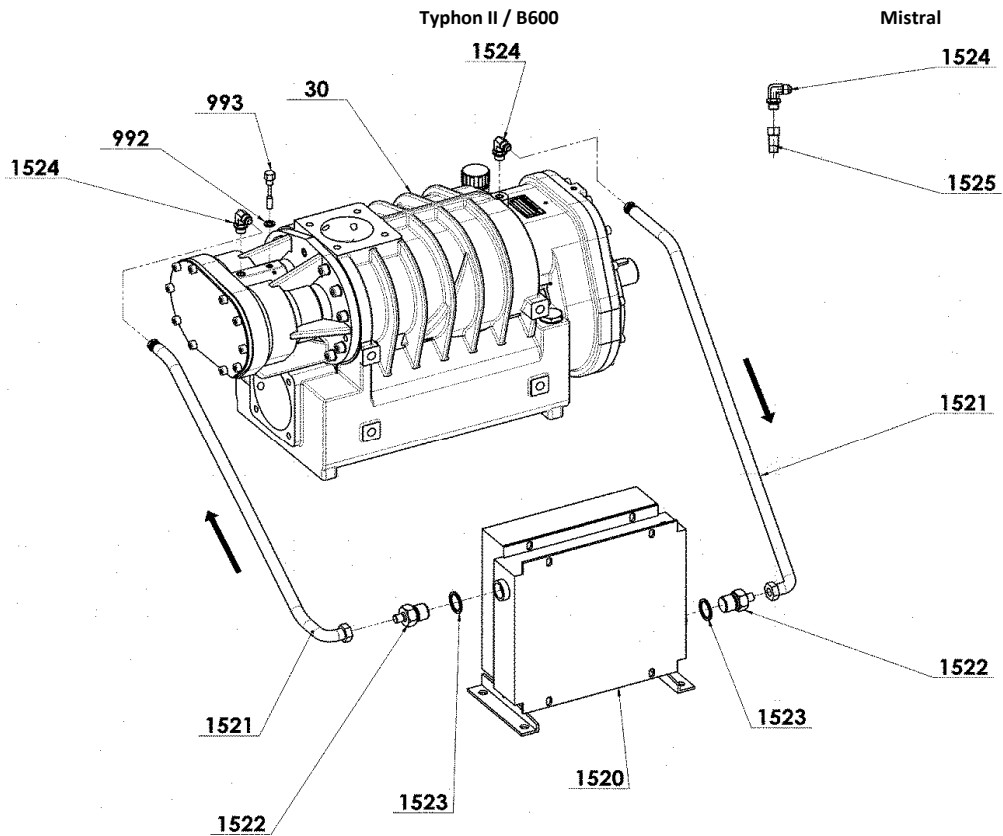


STORZ CONNECTOR KIT

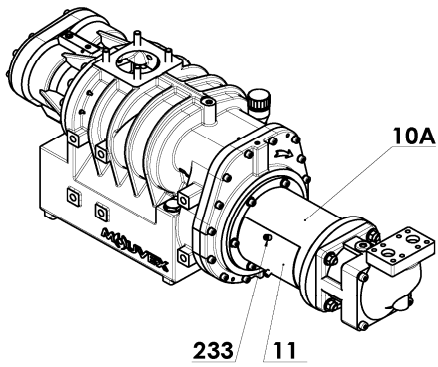
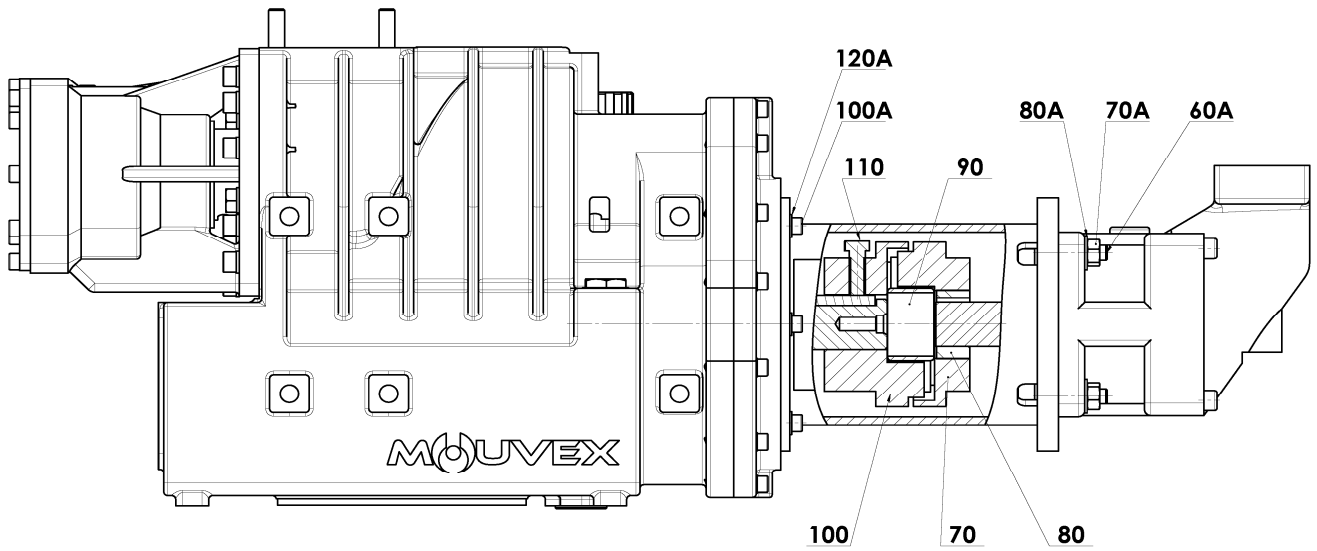
# INTERCOOLER



# OIL COOLER



# HYDRAULIC TRUNK KIT FOR MOTOR



Item	Available	Description	Qty*	Ref.	Maintenance kit	Wear part
<b>CHECK RELIEF VALVE</b>						
524	◆	CHECK RELIEF VALVE 2,5" 2 bar	1	316101.00	■	
524	◆	CHECK RELIEF VALVE 2,5" 2,3 bar	1	316099.00	■	
524	◆	CHECK RELIEF VALVE 2,5" 2,5 bar	1	316103.00	■	
524	◆	CHECK RELIEF VALVE 3" 2 bar	1	316102.00	■	
524	◆	CHECK RELIEF VALVE 3" 2,3 bar	1	316100.00	■	
524	◆	CHECK RELIEF VALVE 3" 2,5 bar	1	316104.00	■	
759	See 1879	Seal	1			
761	See 778	Relief valve (2 bar, 2,3 bar or 2,5 bar)	1			
1801		Check valve body	1			
1805	See 1880	Check valve spring	1			
1807	See 1880	Check valve seat	1			
1808	See 1880	Bush	1			
1809		Valve	1			
1812	See 1880	Seal	1			
1816	▲ See 1879	Gasket flange	2	220562	■	
1818	See 1879	Spring washer	4			
1819	See 1880	Circlips	1			
1821	See 1879	Nut NILSTOP M10	4			
1823	See 1879	Capscrew HM10 X 150	4			
1830	◆	Flange G2.5" BSP	2	227439		
1830	◆	Flange G3" BSP	2	228185		
1834		Serial number plate	1			
1835		Rivet	2			
778	◆	Relief valve 2 bar assembly	1	313477.00	■	
778	◆	Relief valve 2,3 bar assembly	1	313494.00	■	
778	◆	Relief valve 2,5 bar assembly	1	313473.00	■	
759	See 778 & 1879	Seal	1			
761		Relief valve	1			●
1885	◆	CHECK VALVE alone 2,5" (without Relief valve)	1	315580.00		
1885	◆	CHECK VALVE alone 2"/2,5" (without Relief valve)	1	316495.00		
1879	◆	KIT OF SEALS AND SCREWS FOR CHECK RELIEF VALVE (759 + 1816 + 1818 + 1821 + 1823)	1	314413.00		
1880	◆	VALVE KIT FOR CHECK RELIEF VALVE (1805 + 1807 + 1808 + 1812 + 1819)	1	314412.00		
<b>TORQUE LIMITER</b>						
124	◆	TORQUE LIMITER 800 NM ASSEMBLY		317145.00	■	●
125		TORQUE LIMITER 800 NM	1			
125A		MOUNTING KIT	1			
122		Seal	1			
130		Capscrew HM 12 X 40	1			
132		Spacer	1			
124	◆	TORQUE LIMITER 950 NM ASSEMBLY		312548.03	■	●
125		TORQUE LIMITER 950 NM	1			
125A		MOUNTING KIT	1			
122		Seal	1			
130		Capscrew HM 12 X 50	1			
132		Spacer	1			
<b>SILENCER</b>						
119	◆	Silencer	1	225284		

Item	Available	Description	Qty*	Ref.	Maintenance kit	Wear part
------	-----------	-------------	------	------	-----------------	-----------

### COMPLETE INLET FILTER

For B600 - MISTRAL :						
154	◆	FC7-S WITH 180° OUTLET	1	313690.01		
154	◆	FC7-E WITH 90° OUTLET	1	315553.00		
161	◆	Filter element (not shown)	1	223650	■	●

For B600 - MISTRAL - TYPHON II :						
154	◆	FC10-S WITH 180° OUTLET	1	313692.00		
154	◆	FC10-E WITH 90° OUTLET	1	313694.00		
161	◆	Filter element (not shown)	1	215653	■	●

For B600 - MISTRAL - TYPHON II :						
153	◆	CONNECTION KIT HOSE FOR FILTER	1	313689.01	■	
164		Hose - Lg : 1500 mm (not shown)	1			
165		Hose clip (not shown)	3			

### COMPRESSOR FLANGE KIT

COMPRESSOR INLET FLANGE KIT :						
98	◆	180° (TYPHON II)	1	313693.00		
98	◆	180° (B600 / MISTRAL)	1	312169.01		
		Gasket inlet flange (not shown) for :				
116B	◆	TYPHON II	1	215088	■	
116	◆	B600 / MISTRAL	1	219281	■	
120		Capscrews HM 12 X 35 (not shown)	4			
121		Washers (not shown)	4			
98	◆	90° (TYPHON II)	1	313687.00		
98	◆	90° (B600 / MISTRAL)	1	313688.00		
		Gasket inlet flange (not shown)				
116A	◆	TYPHON II	1	215088	■	
116C	◆	B600 / MISTRAL	1	219281	■	
120		Capscrews HM 12 X 45 (not shown)	4			
121		Washers (not shown)	4			
97	◆	COMPRESSOR DISCHARGE FLANGE KIT 2"1/2		312168.00		
140		Discharge flange (not shown)	1			
141B	◆	Discharge gasket (not shown)	1	219281	■	
142		Nut HM 12 (not shown)	4			
144		Washer (not shown)	4			

### PRESSURE LINE FILTER PLF

1399	◆	PRESSURE LINE FILTER PLF N°3 5 μ	1	316095.00		
1407	◆	Filter element 5 microns (PLF N°3 5 μ)	1	220665	■	●
1416		Seal	1			
1417		Plug	1			
1400	◆	Pressure line filter assembly	1	313115.00		
1401	◆	Handle	1	224614		
1402		Gasket	2			
1403		Nut (M12)	3			
1404		Spring washer	1			
1405		Stud	1			
1408	◆	Seal	1	220529		
1410		Body	1			
1411		Plug	2			
1413	◆	Sleeve	1	220719		
1414	◆	Cover	1	220622		
1415		Washer	1			
1420	◆	Safety pin	1	211196		
1421	◆	Ring	4	209643		

### FLANGE KIT (stainless steel)

1429	◆	For PLF N°3 G 2,5"	1	315314.00		
1429	◆	For PLF N°3 G 3"	1	315315.00		
1431	◆	Gasket	2	220562		
1430		Flange G2,5" / G3,5"	2			
1432		Screw CHC M10 X 25	8			
1433		Washer	8			

Item	Available	Description	Qty*	Ref.	Maintenance kit	Wear part
------	-----------	-------------	------	------	-----------------	-----------

#### INTERCOOLER

175	◆	Intercooler (without fan steering)	1	314123.01		
365	◆	Suction case	1	230413		
553	◆	Axial fan 24 VDC	1	223362	■	
553	◆	Axial fan 12 VDC	1	231717	■	
700		Gasket	1			
735		Nut (not shown)	2			
779		Cover	1			
792		Screw HM 12X60 (not shown)	2			
793		Screw HM 12X45 (not shown)	1			
794		Washer (not shown)	3			
1858		Heat exchanger	1			
1859		Screw HM 6X20	4			
1860		Nut HM6	4			
1861		Washer	8			
1862		Screw HM 8X45	6			
1863		Nut HM8	6			
1864		Washer	12			

#### OIL COOLER

1519	◆	OIL COOLER KIT (24 V)		315637.01		
1519	◆	OIL COOLER KIT (12 V)		316718.00		
1520	◆	Oil cooler (24 V)	1	230087		
1520	◆	Oil cooler (12 V)	1	230088		
1523		Seal	2			
990	◆	COMPRESSOR CONVERSION KIT	1	313657.00		
993		Plug	1			
992		Seal	1			
1529	◆	CONNECTION KIT	1	315638.00		
1521		Hose - Lg 2000 mm	2			
1522		Nipple	2			
1524		Elbow nipple	1			
1525		Nipple	1			
1526		Elbow nipple	1			
1531	◆	BSC3 OIL - Can 1,5 l (not shown)	1	316636.00		
990	◆	Connection kit for external oil cooler (992+993)	1	313657.00		

#### OTHERS ACCESSORIES

		Hydraulic trunk kit for PARKER motor				
1205	◆	F12-40	1	311989.00		
1205	◆	F12-60	1	311284.00		
1205	◆	F12-80	1	311835.00		

	◆	STORZ CONNECTOR KIT 3" HOSE THREADED MALE G2.5		316791.00		
188		Connector for 3" hose, threaded male G2.5	1			
187		Plug for connector 3"	1			