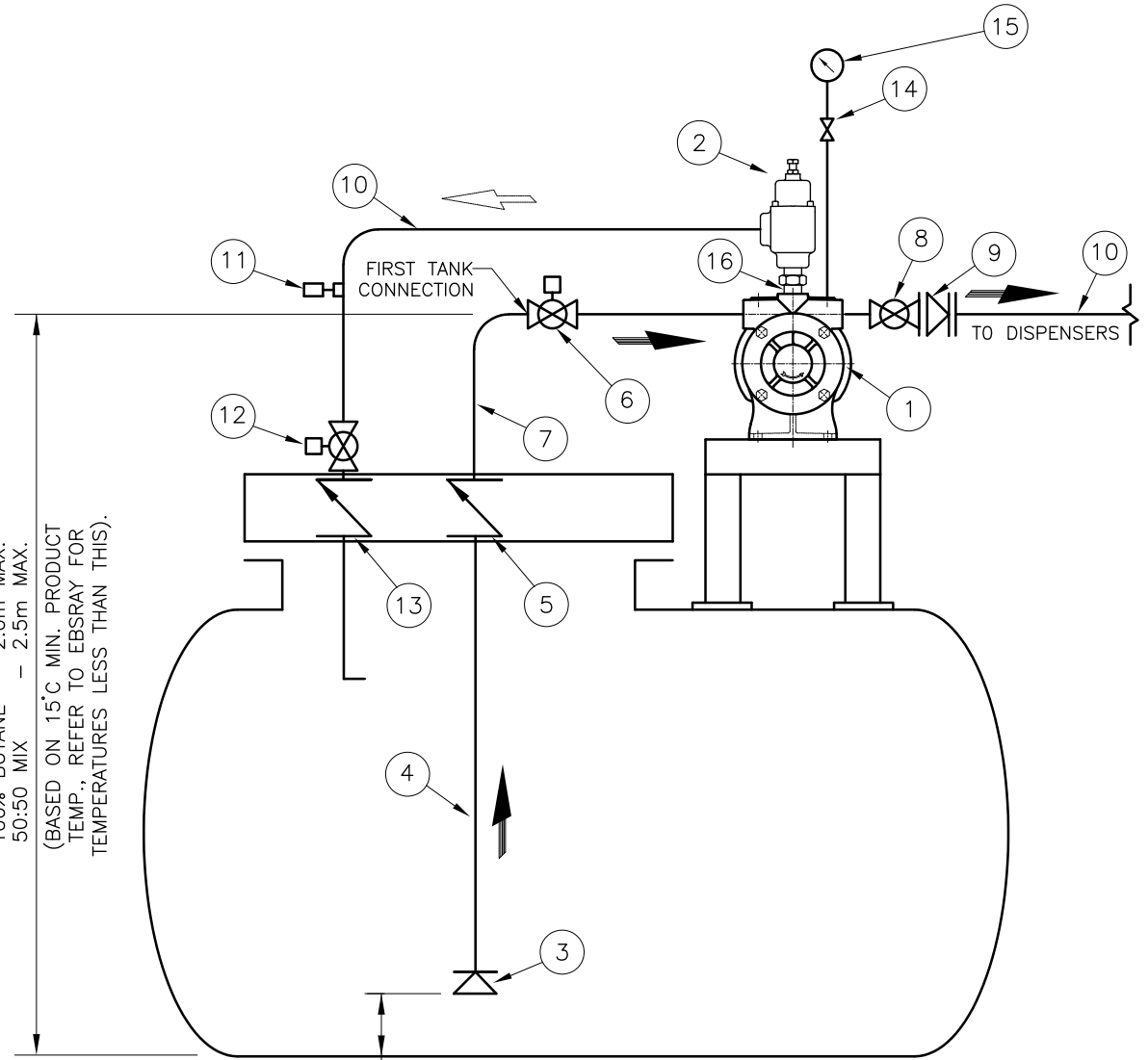


IMPORTANT NOTES

- 1 This P&ID is **TYPICAL ONLY** and Only Relates to the Specifications of the Minimum Equipment Required to Ensure the Optimum Performance, Maximum Life and Trouble-Free Operation of the Ebsray RB10 Pumpset and the Pumping System in General.
- 2 This P&ID Does **NOT** Depict:
 - 2.1 Ancillary Required Equipment Related to the Fabrication, Installation and Operation of the Pumpset e.g. Misc. Flanges, Fittings, Etc..
 - 2.2 Required Equipment unrelated to the Pumpset e.g. Tank Fill Lines, Vapour Return Lines, Emergency Shutdown Systems, Etc.
 - 2.3 The Materials and Method of Fabrication and/or Installation of the Tank and Required Sub-Systems.
- 3 It is the Responsibility of the Designer, Fabricator and the Installer of Each Actual Tank and Required Sub-Systems to Ensure that:
 - 3.1 The Ebsray Specifications within this P&ID and any other Relevant Ebsray Documents are **STRICTLY** Adhered to.
 - 3.2 Any Variation (Including Use of Equipment Deemed "Equivalent") or Addition to the Ebsray Specifications, as Related to the Pumpset and the Pumping System in General, meet Ebsray's Minimum Requirements.
 - 3.3 All Design, Fabrication and Installation of the Tank and Required Sub-Systems is **STRICTLY** in Accordance with all Relevant Federal, State and Local Codes, Regulations and Standards.
- 4 Ebsray Reserves the Right to:
 - 4.1 Withdraw or Alter Any or All of the Ebsray Specifications within this P&ID and any other Relevant Ebsray Documents without Notification.
 - 4.2 Determine the Validity of Any Warranty Claims for Ebsray Equipment Based on the Proper Application of Ebsray Supplied Equipment by the way of Adherence to the Ebsray Specifications within this P&ID and any other Relevant Ebsray Documents.

ITEM	DESCRIPTION	SUPPLY	QTY
1	EBSRAY 'RC25' PUMPSET 1" NPT INLET, DISCHARGE AND BYPASS VALVE PORTS	EBSRAY	1
2	EBSRAY RV18-VRS14 BYPASS VALVE 1" NPT	EBSRAY	1
3	EBSRAY SOFT SEATED NON-RETURN VALVE L850002 50 NB (F)NPT (OPTIONAL)	EBSRAY	1
4	25 NB Sch 40 PIPE (PUMP INLET - IN TANK)	COM'L	1
5	25 NB EXCESS FLOW VALVE REGO A3292C (OR EQUAL)	COM'L	1
6	25 NB FULL BORE PNEUMATIC ACTUATED BALL VALVE	COM'L	1
7	25 NB Sch 40 PIPE (PUMP INLET-ABOVE GROUND)	COM'L	1
8	25 NB FULL BORE (MIN) BALL VALVE	COM'L	1
9	25 NB (MIN) SOFT SEATED 'IN-FLANGE' BACK CHECK VALVE	COM'L	1
10	25 NB Sch 40 PIPE (PUMP DISCHARGE & BYPASS RETURN)	COM'L	1
11	8 NB HYDROSTATIC RELIEF VALVE	COM'L	1
12	25 NB FULL BORE (MIN) PNEUMATIC ACTUATED BALL VALVE	COM'L	1
13	25 NB (MIN) EXCESS FLOW VALVE (NOT NON-RETURN VALVE)	COM'L	1
14	8 NB ISOLATION VALVE	COM'L	1
15	63mm, 0-2500 kPa PRESSURE GAUGE	COM'L	1
16	1" NPT HEX NIPPLE	COM'L	1

100% PROPANE - 3.0m MAX.
 100% BUTANE - 2.0m MAX.
 50:50 MIX - 2.5m MAX.
 (BASED ON 15°C MIN. PRODUCT TEMP., REFER TO EBSRAY FOR TEMPERATURES LESS THAN THIS).



TYPICAL ONLY

REV	DATE	DESCRIPTION	REV. BY	CKD. BY	APPR. BY

UNLESS STATED OTHERWISE
 ALL DIMENSIONS IN MILLIMETRES

EBSRAY AUSTRALIA
EBS-RAY PUMPS PTY.LTD
 ABN 52 000 061 003
 628 Pittwater Road Ph.(61 2) 9905 0234
 Brookvale NSW 2100 Fax(61 2) 9938 3825
 Australia www.ebsraypumps.com.au

TITLE: TYPICAL INSTALLATION P&ID-AUS EBSRAY RC25 PUMP			
SCALE: NA	DATE: 25-11-03		
DRAWN: J.J.D.	CHK.D: J.J.D.	APPR.:	
COMP.No: A316002K	DRG.No A316002K	REV. 0	