

BLACKMER PARTS LIST

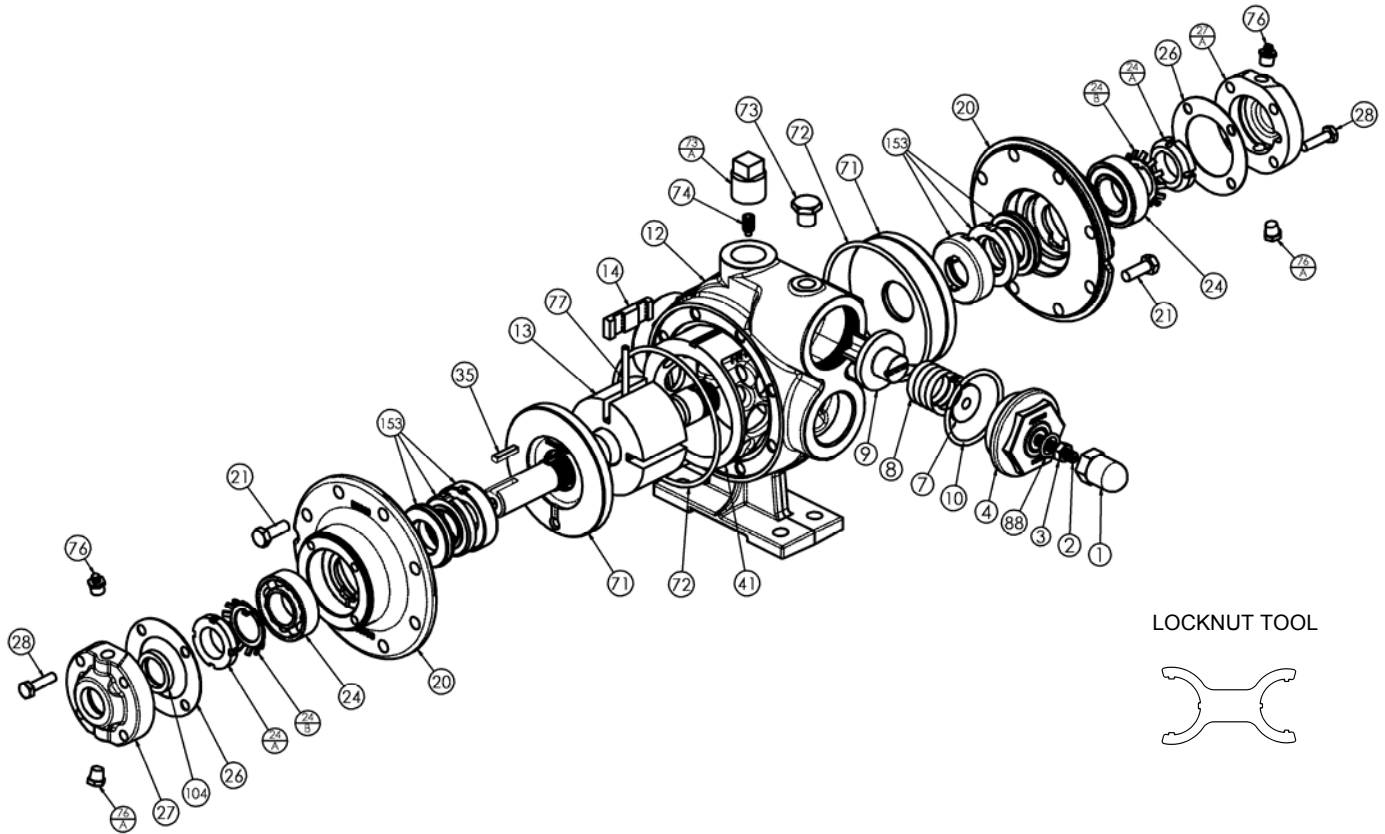
PUMP MODELS: XRL1.25A, XL1.25A, XL1.5A XRLF1.25B, XLF1.25B, XLF1.5B

and discontinued models X(R)LF1.25(A), XLF1.5(A), X(R)L1.25, XL1.5
Keep with Instructions 107-A00 for Installation, Operation and Maintenance

96208
Page 1 of 3

PARTS LIST
107-A01

Section 107
Effective Jun 2014
Replaces Sept 2011



Ref. No.	Description	Parts per Pump	Part No.	Ref. No.	Description	Parts per Pump	Part No.	
1	Cap – Relief Valve (R/V)	1	413200	27	Bearing Cover – Inboard	0-1	043070	
2	Adjusting Screw – R/V	1	433909	27A	Bearing Cover – Outboard	1	043071	
3	Locknut – Adjusting Screw	1	922923	28	Capscrews – Bearing Cover	4-8	920080	
4	Cover – R/V	1	413076	35	Key – Shaft, Square	1	^{1,3} 909152	
7	Spring Guide – R/V	1	423955	41	Liner – XRL(F) 1.25	1	² 183003	
8	Spring – R/V (20 - 50 psi)	1	471415	71	Liner – XL(F) 1.25	2	² 183004	
	Spring – R/V (51 - 80 psi) (Std.)		471420		² 183301			
	Spring – R/V (81 - 150 psi)		471428		² 063075			
9	Valve – R/V	1	453079	72	Disc	2	² 063075	
10	O-Ring – R/V Cover (FKM) (Std.)	1	¹ 701970	72	O-Ring – Head (FKM) (Std.)	2	¹ 701991	
	O-Ring – R/V Cover (PTFE)		702084		O-Ring – Head (PTFE)		702066	
	O-Ring – R/V Cover (Buna)		711924		O-Ring – Head (Buna)		701918	
	12		Casing with Feet(1.25)	1	013075	73	Gage Plug (1/4")	1
Casing with Feet(1.5)	013376	73A	Gage Plug (3/4")		1	908225		
13	Rotor & Shaft Assembly, Four Vane (Includes Ref. Nos. 24A & 24B)	1	² 263076	74	Setscrew – Liner	1	922088	
	14		Vane – Duravane (Std.)	4	¹ 093088	76	Grease Fitting	2
	Vane – Extra Clearance Laminate	093091	76A		Grease Relief Fitting		2	701992
20	Head	2	033073	77	Push Rod – XRL(F) 1.25	2	¹ 123004	
21	Capscrews – Head	16	920276		Push Rod – XL(F) 1.25		¹ 123076	
					Push Rod XL(F) 1.5		¹ 123401	
24	Ball Bearing	2	¹ 903114	88	O-Ring – R/V Cap (FKM) (Std.)	1	¹ 701908	
24A	Locknut – Bearing	2	² 903534		O-Ring – R/V Cap (PTFE)		702074	
24B	Lockwasher – Bearing	2	¹ 903533		O-Ring – R/V Cap (Buna)		701949	
26	Gasket - Bearing Cover	1-2	¹ 383075	104	Grease Seal	1	¹ 331927	
							Locknut Tool & Maintenance / Rebuild Kits	Page 3

¹ Included in Maintenance Kits and Rebuild Kits

² Included in Rebuild Kits

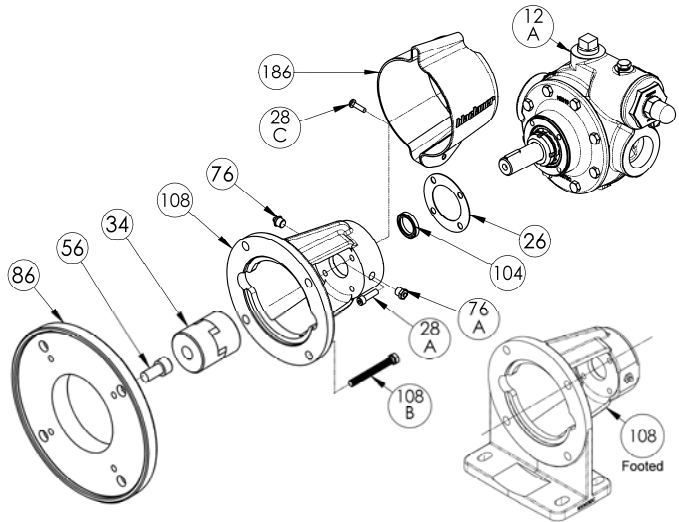
³ Maintenance Kits and Rebuild Kits also include Woodruff Key 909125 used previously

Ref. No. 73A: Earlier versions of these pumps may use a 1/4" plug (pn 908198) or 1/2" plug (pn 908215).

Note: earlier versions of these pumps used taper pins, which are no longer required.

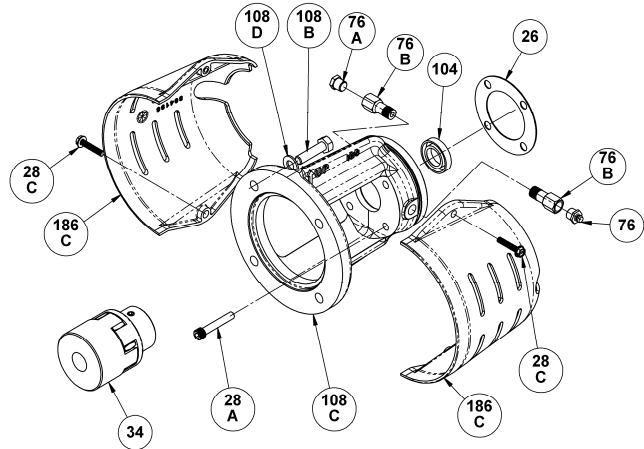
**NEMA C-Face Motor Adaptors
XLRF and XLF Models**

Ref. No.	Description	Parts per Pump	Part No.
12A	Casing without Feet – X(R)LF1.25	1	013077
	Casing without Feet – XLF1.5		013377
26	Gasket - Bearing Cover	1	383075
28A	Motor Adaptor Mounting Screws	4	920101
28C	Guard Screw	1	920026
34	Coupling Half – Pump	1	906147
	Coupling Spider		906155
	Coupling Half – Motor (56C)		906151
	Coupling Half – Motor (143TC,145TC,184C)		906147
	Coupling Half – Motor (182TC,184TC,215C)		906146
56	Capscrews – Adapter Ring Mounting	4	920480
76	Grease Fitting	1	317815
76A	Grease Relief Fitting	1	701992
86	Motor Adapter Ring - 182TC,184TC,215C	1	832914
104	Grease Seal	1	331927
108	Motor Adaptor – Unfooted	1	832912
	Motor Adaptor – Footed (Both include Ref. 76 & 76A)		833000
108B	Capscrews - Motor Adaptor	4	920331
186	Guard	1	804120



**IEC Flanged Motor Adaptor
XLRF and XLF Models**

Ref. No.	Description	Parts per Pump	Part No.
26	Gasket - Bearing Cover	1	383075
28A	Motor Adaptor Mounting Screws	4	920101
28C	Guard Screw	2	920026
34	Coupling Half – Pump (for IEC100/112)	1	906182
	Coupling Spider (for IEC100/112)		906178
	Coupling Half – Motor (IEC100/112)		906180
76	Grease Fitting	1	317815
76A	Grease Relief Fitting	1	701992
76B	Extension Coupling	2	701905
104	Grease Seal	1	331927
108B	Capscrew – Motor Adaptor to Motor	4	920044
108C	Motor Adaptor (IEC 100/112 B14A) Includes Ref. Nos. 76, 76A & 76B	1	832930
108D	Washer	4	792094
186C	Guard Half	2	804198

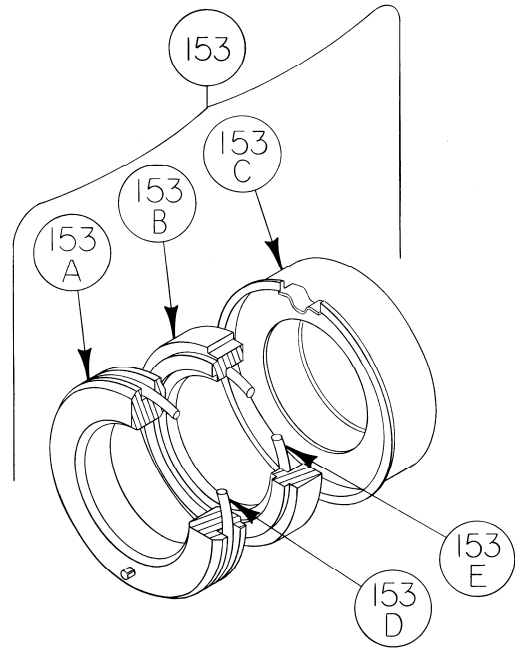


MECHANICAL SEAL

Ref. No.	Mechanical Seal Assembly	Parts Per Pump	Part No.
153	Hardened Steel Stationary Seat, Carbon Rotating Seal Face, FKM O-Rings (SVCV)- (STD)	2	¹ 333044
	Hardened Steel Stationary Seat with PTFE O-Ring, Carbon Rotating Seal Face with PTFE Seal Ring (SACT)		332381
	Hardened Steel Stationary Seat, Carbon Rotating Seal Face, Buna O-Rings (SNCN)		333045
153A	Stationary Seat (Hardened Steel)	2	**
153B	Seal Face (Carbon)	2	**
153C	Jacket Assembly	2	**
153D	O-Ring – Stationary (FKM)	2	711908
	O-Ring – Stationary (PTFE)		702076
	O-Ring – Stationary (Buna-N)		711916
153E	O-Ring – Rotating (FKM)	2	701971
	O-Ring – Rotating (PTFE)		711961
	O-Ring – Rotating (Buna-N)		711915

¹ Included in Maintenance Kits and Rebuild Kits

** Not available as separate replacement parts.



LOCKNUT TOOL and MAINTENANCE / REBUILD KITS

Tool – Locknut	903090
Kit - Maintenance , XRL(F)1.25	898966
Kit - Maintenance , XL(F)1.25	898968
Kit - Maintenance , XL(F)1.5	898970
Kit – Rebuild , XRL(F)1.25	899066
Kit – Rebuild , XL(F)1.25	899068
Kit – Rebuild , XL(F)1.5	899070



1809 Century Avenue, Grand Rapids, Michigan 49503-1530, U.S.A.
 Telephone: (616) 241-1611 / Fax: (616) 241-3752
 E-Mail: blackmer@blackmer.com / Internet: www.blackmer.com

Parts List 107-A01
 Page 3 of 3