

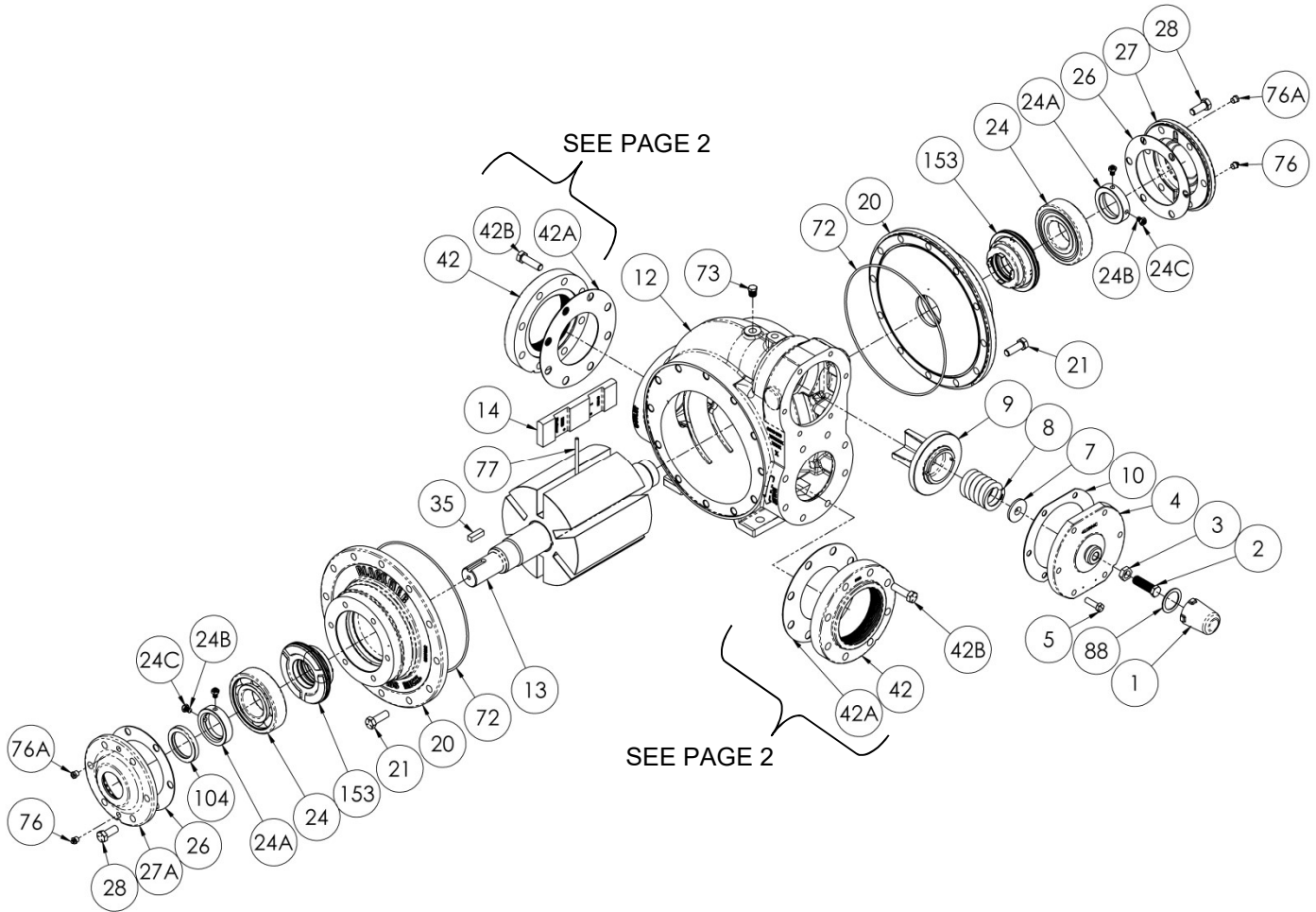
# BLACKMER PARTS LIST

## PUMP MODEL: XH4B

961913      **PARTS LIST**  
Page 1 of 2      **101-B18**

Keep with Instructions 101-B00 for Installation, Operation and Maintenance

Section      101  
Effective      Jul 2019  
Replaces      Feb 2019

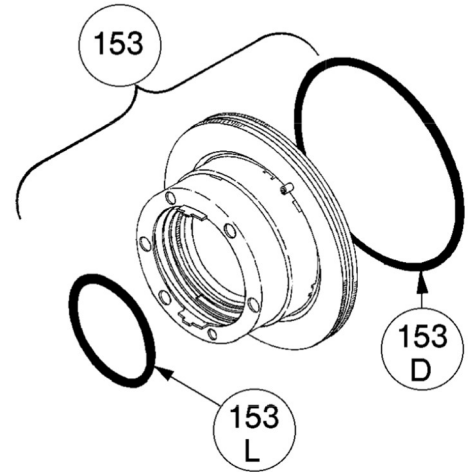


Ref. No.	Description	Parts per Pump	Part No.	Ref. No.	Description	Parts per Pump	Part No.		
1	Cap - Relief Valve (R/V)	1	413957	24	Ball Bearing	2	<sup>1</sup> 903182		
2	Adjusting Screw - R/V	1	436307	24A	Lock Collar - Bearing (with Setscrew 24B)	2	<sup>1,2</sup> 721937		
3	Locknut - Adjusting Screw	1	436355	24B	Setscrew	4	<sup>1,2</sup> 922104		
4	Cover - R/V	1	411904	24C	Jam Nut	4	<sup>1,2</sup> 922923		
5	Capscrew - R/V Cover	6	920351	26	Gasket - Bearing Cover	2	<sup>1</sup> 386950		
7	Spring Guide - R/V	1	426355	27	Bearing Cover - Outboard	1	041905		
8	Spring - R/V (36-50 psi)	1	476303	27A	Bearing Cover - Inboard	1	041903		
	Spring - R/V (51-75 psi)		476310	28	Capscrews - Bearing Cover	12	920491		
	Spring - R/V (76-110 psi)		476305	35	Key - Shaft, Square	1	<sup>1,3</sup> 909149		
	Spring - R/V (111-125 psi)			42	Flange Options	See Page 2			
9	Valve - R/V (Std.)	1	456315	42A	Gasket			See Page 2	
	Valve - R/V (Nickel Plated)	1	456300	42B	Capscrews				
10	Gasket - R/V Cover	1	<sup>1</sup> 531903	72	O-Ring - Head (FKM) (Std.)	2	<sup>1</sup> 702024		
12	Cylinder	1	021915		O-Ring - Head (PTFE)		702093		
14	Vane - Duravane (Std.)	6	<sup>1</sup> 091924		O-Ring - Head (Buna-N)		702023		
	Vane - EC Cast Iron		091952	73	Gage Plug	2	908198		
	Vane - EC Laminate		091931	76	Grease Fitting	2	317815		
20	Head	2	031908	76A	Grease Relief Fitting	2	701992		
21	Capscrews - Head	24	920510	77	Push Rod	3	<sup>1</sup> 121905		
				88	Gasket - R/V Cap	1	<sup>1</sup> 533908		
				104	Grease Seal	1	<sup>1</sup> 904190		
					Kit - Maintenance		898959		

<sup>1</sup> Included in Maintenance Kit  
SS = Stainless Steel.      EC = Extra-Clearance.

**MECHANICAL SEALS**

Ref. No.	Part Name	Parts Per Pump	Part No.
153	<b>Mechanical Seals Complete -</b> Cast Iron Stationary Seat, Carbon Seal Face, FKM O-Rings. (IVCV) (Std.)	2	<sup>1</sup> 336982
	Cast Iron Stationary Seat, PTFE O-Ring, Carbon Seal Face w/ PTFE Seal Ring. (IACT)		331973
	Stainless Steel Stationary Seat, PTFE O-Ring, Carbon Seal Face w/ PTFE Seal Ring. (WACT)		331901
	Cast Iron Stationary Seat, Carbon Seal Face, Buna-N O-Rings. (INCN)		336958
153D	O-Ring - Stationary (FKM)	2	711932
	O-Ring - Stationary (PTFE)		702090
	O-Ring - Stationary (Buna-N)		701945
153L	O-Ring - Rotating (FKM)	2	701967
	Seal Ring - Rotating (PTFE)		**
	O-Ring - Rotating (Buna-N)		701933



<sup>1</sup> Included in Maintenance Kit

\*\*PTFE Rotating Seal Ring is not available as a separate part.

**FLANGE OPTIONS**

Ref. No.	Part Name	Parts Per Pump	Part No.
42	Flange - 4" NPT (Std.)	2	651900
	Flange - 4" Weld		651906
	Flange - 4" ANSI		651917
42A	Gasket - NPT Flange (Std.)	2	<sup>1</sup> 381904
42B	Capscrews - Weld / ANSI Flange	16	920532
	Capscrews - NPT Flange (Std.)		920532
42C	O-Ring - Weld/ANSI Fig. (FKM)	0 - 2	702238
	O-Ring - Weld/ANSI Fig. (PTFE)		702239
	O-Ring - Weld/ANSI Fig (Buna-N)		702237

<sup>1</sup> Included in Maintenance Kit

