

# BLACKMER PUMP PARTS LIST

960244

**PARTS LIST NO. 185/F7**

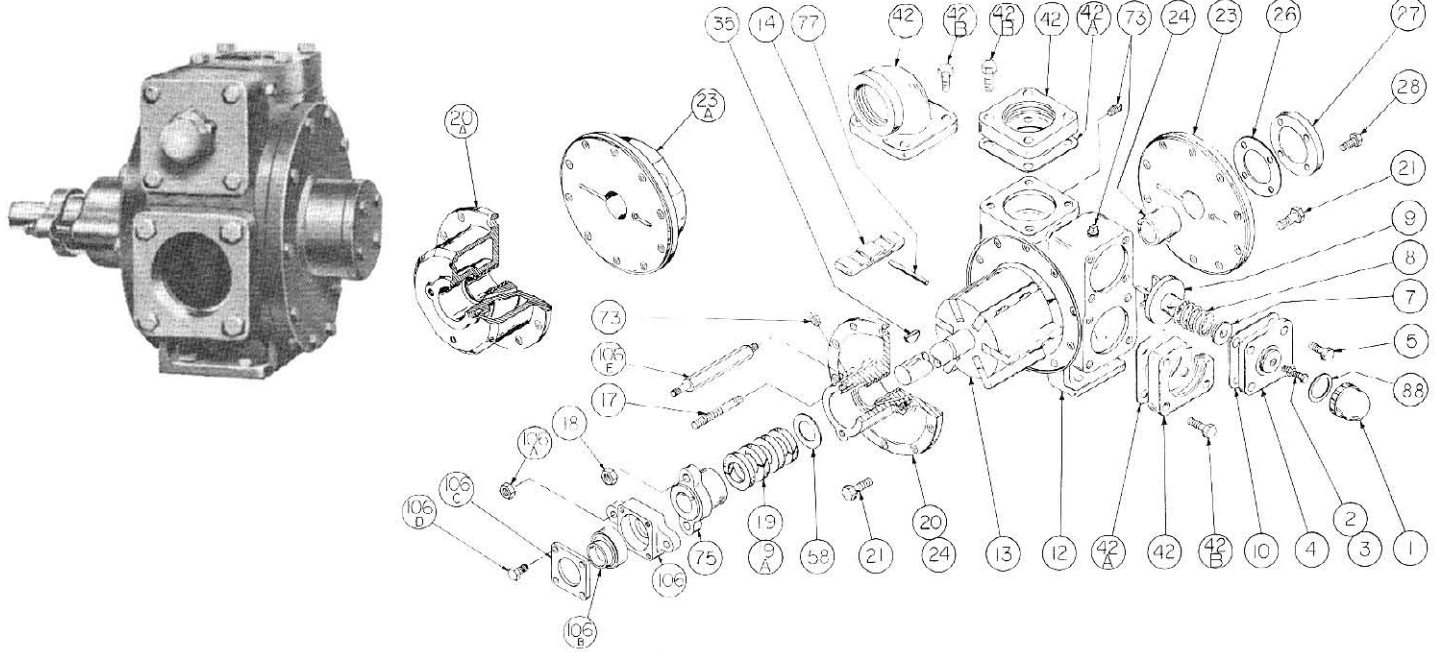
## MODELS: NP3B, NPJ3B

(See Instructions 185/F for Operation and Maintenance)

Discontinued Models. Parts availability may be limited.

Section  
Effective  
Replaces

100  
November 1988  
August 1978



REF. NO.	PART NAME	PARTS PER PUMP	PART NO.	REF. NO.	PART NAME	PARTS PER PUMP	PART NO.
1	Cap - Relief Valve (R/V)	1	413952	20	Head & Bushing Asy. - Inboard	1	031852
2	Adjusting Screw - R/V	1	431808	20A	Head & Bushing Asy. - Inboard (Jacketed)	1	031856
3	Locknut - R/V Adjusting Screw	1	922923	21	Capscrews - Head	20	920369
4	Cover - R/V	1	411807	23	Head & Bushing Asy. - Outboard	1	031853
5	Capscrew - R/V Cover	4	920331	23A	Head & Bushing Asy. - Outboard (Jacketed)	1	031857
7	Spring Guide - R/V	1	421805	24	Sleeve Bearing	2	161600
8	Spring - R/V (30-35 psi)	1	471804	26	Gasket - Bearing Cover	1	381815#
	Spring - R/V (36-50 psi)		471805	27	Bearing Cover	1	041821
	Spring - R/V (51-110 psi) (Std.)		471806	28	Capscrews - Bearing Cover	4	920178
	Spring - R/V (111-150 psi)		471809		Key - Shaft (1/8")		909130
	SS Spring - R/V (36-50 psi) 1		471815	35	Key - Shaft (1/16")	1	909135
	SS Spring - R/V (51-110 psi) 1		471807		Flange - 3" NPT	1 - 2	651803
	SS Spring - R/V (111-150 psi) 1		471808	42	Flange - 3" Weld		655106
			Flanged Elbow - 3" NPT	651805			
9	Valve - R/V	1	451807				
10	Gasket - R/V Cover (Composition)	1	531850#	42A	Gasket - Flange (Fiber)	2	381811#
12	Cylinder	1	021805		Gasket - Flange (Composition)		381816#
13	Rotor & Shaft (Std. - NP) (1/16" X 13")	1	261825	42B	Capscrew - NPT Flange	4 - 8	920532
	EC Rotor & Shaft (Std. - NPJ) (1/16" X 13") 3		261827		Capscrew - Flanged Elbow, Weld Flange		920510
	Rotor & Shaft (1 1/8" X 13")		261853	73	Gage Plug	3	908195
	EC Rotor & Shaft (1 1/8" X 13") 3		261849	77	Push Rod	3	121807
	Rotor & Shaft (1 1/8" X 18 1/8") 2		261821	88	Gasket - R/V Cap	1	533908#
	EC Rotor & Shaft (1 1/16" X 18 1/8") 2,3		261823		Shaft Support Bearing Kit		871167
14	Vane - Duravane (NP - Std.)	6	091819	106	Flange - Bearing	1	652251
	Vane - Laminate		091809	106A	Locknut - Bearing Flange	2	922428
	Vane - Cast Iron		091807	106B	Bearing & Collar Asy.	1	903123
	Vane - Bronze		091806	106C	Cover - Bearing Flange	1	651853
	Vane - EC Laminate 3		091829	106D	Capscrew - Bearing Flange	4	920178
	Vane - EC Cast Iron 3		091821	106E	Rod - Flange	2	652252
	Vane - EC Bronze 3 (NPJ - Std.)		091804		Gasket Repair Kit		891900

# Parts included in Gasket Repair Kit.

1 Optional Stainless Steel Spring (Over 300°F/149°C).

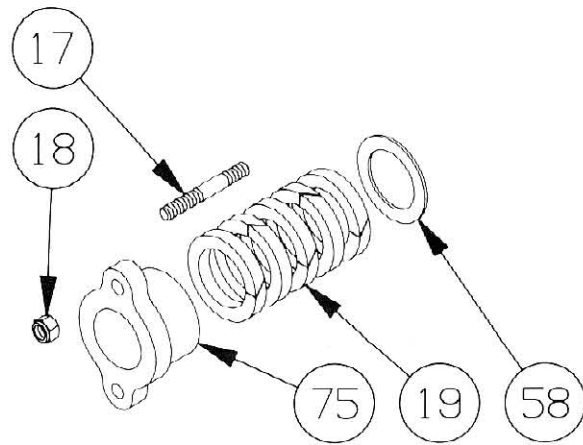
2 Used for V-Belt drive. A commercial shaft support bearing must be added.

3 Use for viscosities over 20,000 SSU (4250 Cs), and/or jacket option. (Indicated by markings on outboard shaft ends and on vanes).

**PARTS LIST NO. 185/F8**

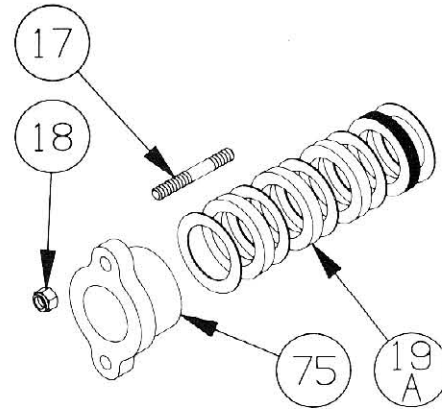
**NP(J)3 - PACKING - STANDARD**

REF. NO.	PART NAME	PARTS PER PUMP	PART NO.
17	Stud - Packing Follower	2	921450
18	Nut - Packing Follower Stud	2	922428
19	Packing	1	325176
58	Pack Washer	1	355107
75	Packing Follower	1	141803



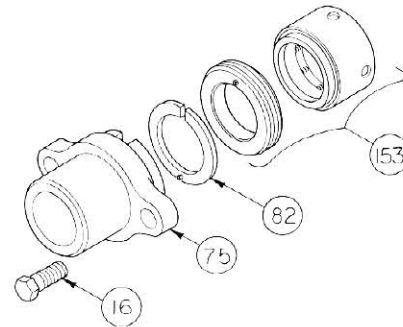
**NP(J)3 - TEFLON LIP SEAL - OPTIONAL**

REF. NO.	PART NAME	PARTS PER PUMP	PART NO.
17	Stud - Packing Follower	2	921450
18	Nut - Packing Follower Stud	2	922428
19A	Lip Seal	1	331678
75	Packing Follower	1	141803



**NP(J)3 - MECHANICAL SEAL - OPTIONAL**

REF. NO.	PART NAME	PARTS PER PUMP	PART NO.
16	Capscrew - Seal Follower	2	920316
75	Follower - Seal	1	141803
82	Spacer Assembly	1	371803
153	Mechanical Seal - (Crane #9)	1	331849



**OPTIONAL PARTS FOR SHEAR SENSITIVE LIQUIDS - NP3 MODEL**  
(Must be used as a group)

REF. NO.	PART NAME	PARTS PER PUMP	PART NO.
13	Rotor & Shaft (1/16" X 13")	1	261828
14	Vane - EC Iron	6	091821
20	Head & Bushing Asy. - Inboard	1	031854
23	Head & Bushing Asy. - Outboard	1	031855

**OPTIONAL PARTS FOR SHEAR SENSITIVE LIQUIDS - NPJ3 MODEL**  
(Must be used as a group)

REF. NO.	PART NAME	PARTS PER PUMP	PART NO.
13	Rotor & Shaft (1/16" X 13")	1	261828
14	Vane - EC Iron	6	091821
20	Head & Bushing Asy. - Inboard	1	031858
23	Head & Bushing Asy. - Outboard	1	031859