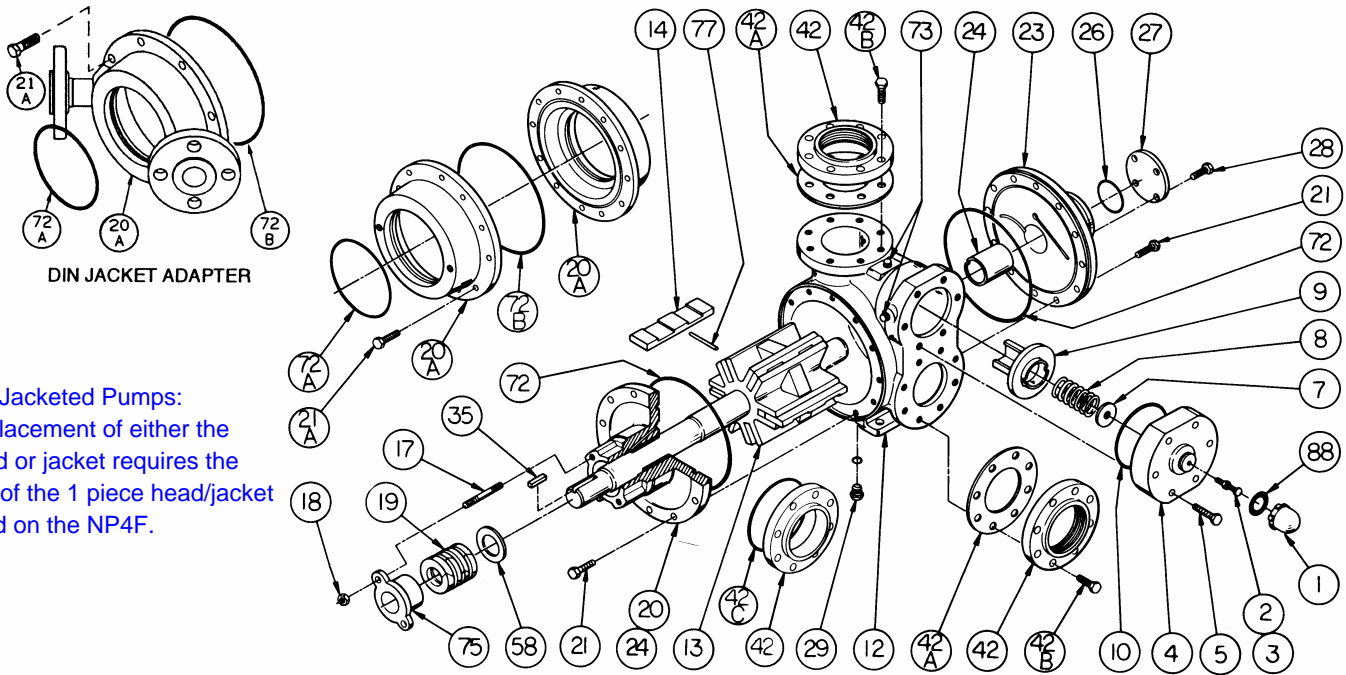


BLACKMER PARTS LIST

PUMP MODEL: NP4E DISCONTINUED MODEL: NP4C

NOTE: "E" model suffix indicates FKM replaces Buna-N as the standard elastomer.
(See Instructions ~~103-A05-01~~ 185/F for Installation, Operation and Maintenance)

| | |
|-----------|---------------|
| Section | 103 |
| Effective | July 2001 |
| Replaces | 185/F5 June95 |



Re. Jacketed Pumps:
Replacement of either the head or jacket requires the use of the 1 piece head/jacket used on the NP4F.

| Ref. No. | Description | Parts per Pump | Part No. | Ref. No. | Description | Parts per Pump | Part No. |
|----------|---|---|-------------------------|----------|--|----------------|------------------|
| 1 | Cap - Relief Valve (R/V) | 1 | 415000 | 14 | Vane - EC Bronze | 6 | 091953 |
| 2 | Adjusting Screw - R/V (Std.) | 1 | 436307 | 20 | Head & Bushing Asy. - Inboard | 1 | 031968 |
| | Adjusting Screw - R/V ¹ | | 436311 | | SAE Heating Jacket | | 031970 |
| 3 | Locknut - Adjusting Screw | 1 | 436355 | 20A | Din Heating Jacket/Adapter Asy. | 0 - 2 | 891997 |
| | | | | | 21 | | Capscrews - Head |
| 4 | Cover - R/V (Std.) | 1 | 411968 | 21A | Capscrews - Heating Jacket | 0 - 24 | 920549 |
| | Cover - R/V ¹ | | 411969 | | | | |
| 5 | Capscrew - R/V Cover (Std.) | 6 | 920351 | 23 | Head & Bushing Asy. - Outboard | 1 | 031969 |
| | Capscrew - R/V Cover ¹ | | 920421 | 24 | Sleeve Bearing | 2 | 161900 |
| 7 | Spring Guide - R/V | 1 | 426355 | 26 | O-Ring - Bearing Cover (FKM) (Std.) | 1 | 702222 |
| | | | 476303 | | O-Ring - Bearing Cover (PTFE) | | 702225 |
| | | | 476310 | 27 | Bearing Cover | 1 | 041900 |
| | | | 476305 | 28 | Capscrews - Bearing Cover | 4 | 920611 |
| | | | 476968 | 29 | Pipe Plug Asy. ² (SAE # 6) (FKM) (Std.) | 1 | 908212 |
| | | | 476320 | | Pipe Plug Asy. ² (SAE # 6) (PTFE) | | 908213 |
| | | | 476314 | 35 | Key - Shaft | 1 | 909191 |
| | | | 476321 | 42 | Flange - 4" NPT (Std.) ⁴ | 2 | 651900 |
| 476969 | 42A | Gasket - NPT Flange (Comp.) (Std.) ⁴ | 2 | 381904 | | | |
| 9 | Valve - R/V (Std.) | 1 | 456315 | 42B | Capscrew - NPT / Weld Flange | 8 | 920532 |
| | Valve - R/V (Nickel Plated) | | 456300 | | | | |
| 10 | O-Ring - R/V Cover (FKM) (Std.) | 1 | 702229 | 72 | O-Ring - Head (FKM) (Std.) | 2 | 702128 |
| | | | 702230 | | O-Ring - Head (PTFE) | | 702129 |
| 12 | Cylinder (Std.) | 1 | 021906 | 72A | O-Ring (Small) - Jacket (FKM) ³ | 0 - 2 | 702223 |
| | Cylinder w/ Drain (Ductile Iron) ² | | 021911 | | O-Ring (Small) - Jacket (EPR) ³ | | 702251 |
| 13 | Rotor & Shaft (Std.) | 1 | 261968 | 72B | O-Ring (Large) - Jacket (FKM) ³ | 0 - 2 | 702128 |
| | Rotor & Shaft (Ext. Length) | | 261969 | | O-Ring (Large) - Jacket (EPR) ³ | | 702255 |
| 14 | Vane - Duravane (Std.) ⁵ | 6 | 091924 | 73 | Gage Plug | 2 | 908198 |
| | Vane - EC Laminate | | 091931 | 77 | Push Rods | 3 | 121905 |
| | Vane - EC Cast Iron | | 091952 | 88 | O-Ring - R/V Cap (FKM) (Std.) | 1 | 711908 |
| | | | O-Ring - R/V Cap (PTFE) | 702076 | | | |

¹Optional High Pressure Relief Valve - **parts must be used as a group** (includes p/n's 436311, 411969, 920421, and either 476968 or 476969).

²SAE Plug standard with cylinder p/n 021911.

³For hot oil circulation use FKM O-Rings; For steam circulation use EPR O-Rings.

⁴See backside for Flange Options.

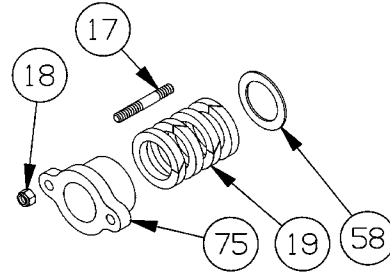
⁵150 psi maximum for Duravanes.

EC = Extra-Clearance

SS = Stainless Steel

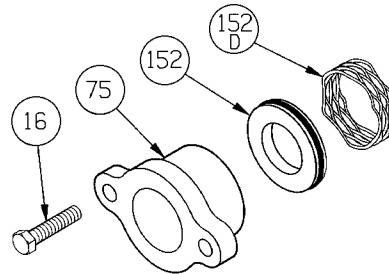
PACKING - STANDARD

| Ref. No. | Part Name | Parts Per Pump | Part No. |
|----------|-----------------------------|----------------|----------|
| 17 | Stud - Packing Follower | 2 | 921610 |
| 18 | Nut - Packing Follower Stud | 2 | 922435 |
| 19 | Packing Set | 1 | 321968 |
| 58 | Pack Washer | 1 | 351900 |
| 75 | Packing Follower | 1 | 141968 |



LIP SEAL - OPTIONAL

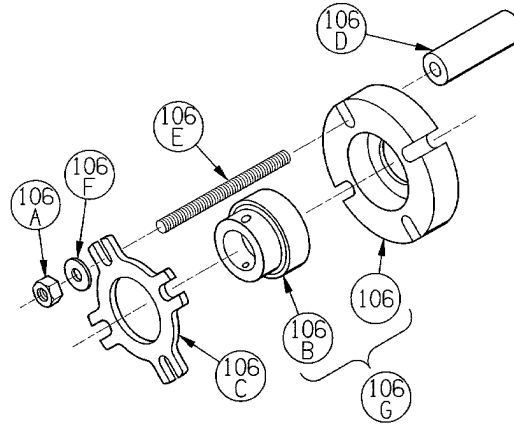
| Ref. No. | Part Name | Parts Per Pump | Part No. |
|----------|------------------------------|----------------|----------|
| 16 | Capscrew - Follower | 2 | 920640 |
| 75 | Seal Follower | 1 | 141968 |
| 152 | Lip Seal Assembly (To 500°F) | 1 | 702246 |
| 152D | Wave Spring | 1 | 321901 |



NOTE: A Commercial Mechanical Seal (cartridge type) can be used in place of packing or lip seals. Consult mechanical seal manufacturer for more information.

SHAFT SUPPORT BEARING - OPTIONAL*

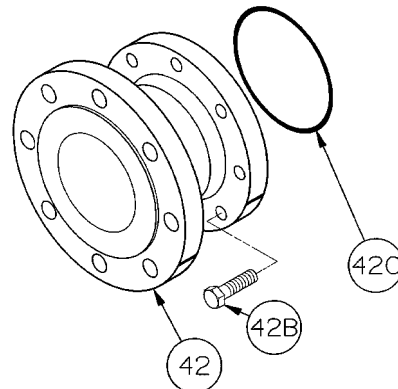
| Ref. No. | Part Name | Parts Per Pump | Part No. |
|-----------|--|----------------|----------|
| See Below | Shaft Support Bearing Kit | See below | 891998 |
| 106 | Bearing Housing | 1 | 631901 |
| 106A | Locknut - Bearing Housing | 4 - 6 | 922435 |
| 106B | Bearing & Collar Assembly | 1 | 903138 |
| 106C | Cover - Bearing Housing | 1 | 631900 |
| 106D | Stand Off - Bearing Support (for use with packing) | 2 | 631902 |
| | Stand Off - Bearing Support (for use with mechanical seal) | 4 | 631903 |
| 106E | Stud - Bearing Support | 4 | 921620 |
| 106F | Washer - Locknut | 4 | 909605 |
| 106G | Bearing & Housing Assembly | — | 631904 |



*Shaft Support Bearing is designed for use with Extended Length Rotor & Shaft - p/n 261969.

FLANGE OPTIONS

| Ref. No. | Part Name | Parts Per Pump | Part No. |
|----------|-----------------------------------|----------------|----------|
| 42 | Flange - 4" Weld (shown on front) | 0 - 2 | 651906 |
| | Flange - DIN 100 | | 651918 |
| | Flange - ANSI 4" | | 651917 |
| 42B | Capscrew - DIN/ANSI Flange | 0 - 16 | 920532 |
| 42C | O-Ring - Flange (FKM) | 0 - 2 | 702238 |
| | O-Ring - Flange (PTFE) | | 702239 |



DIN / ANSI FLANGE

