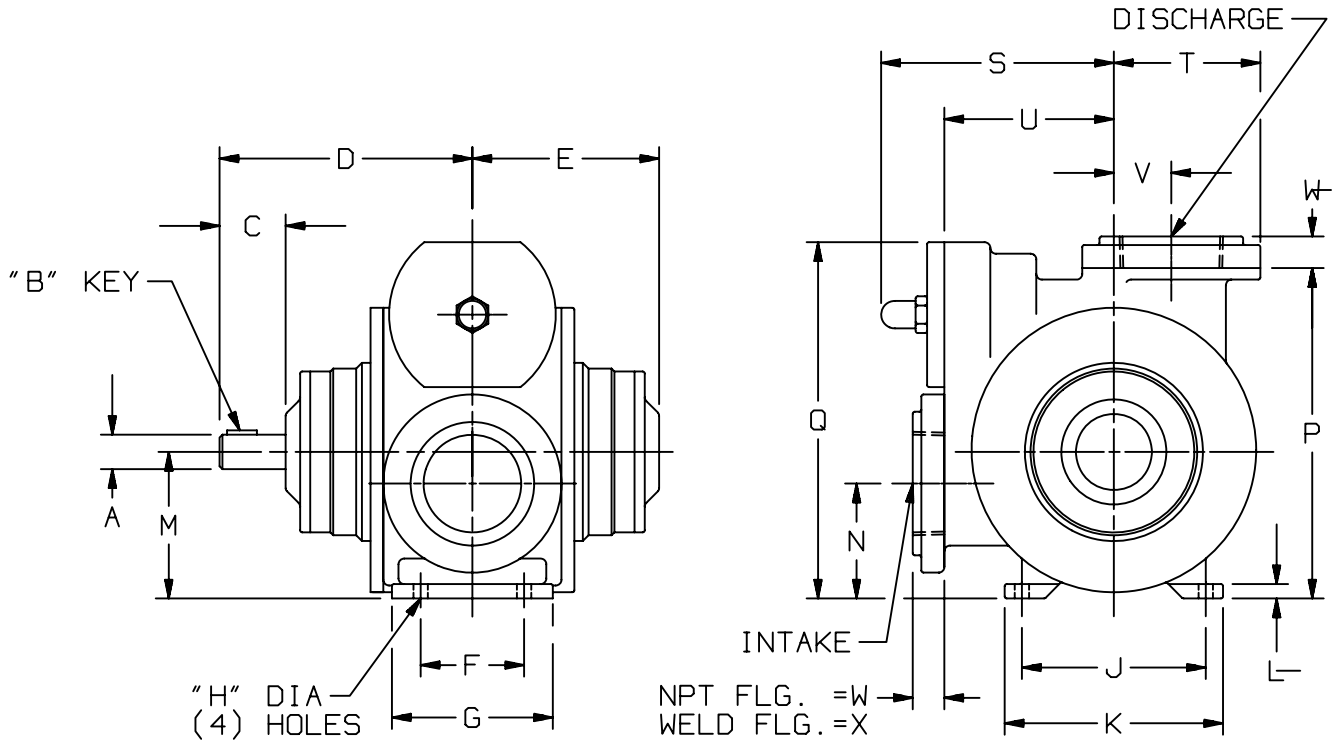


TYPE	SIZE	UNIT STYLE
X	4B	PO

DIMENSIONS 101-112	
Section	101
Effective	September 2004
Replaces	February 2003
Page	1/3

RIGHT HAND ROTATION. FOR LEFT HAND ROTATION, SHAFT PROJECTION IS OPPOSITE THAT SHOWN.



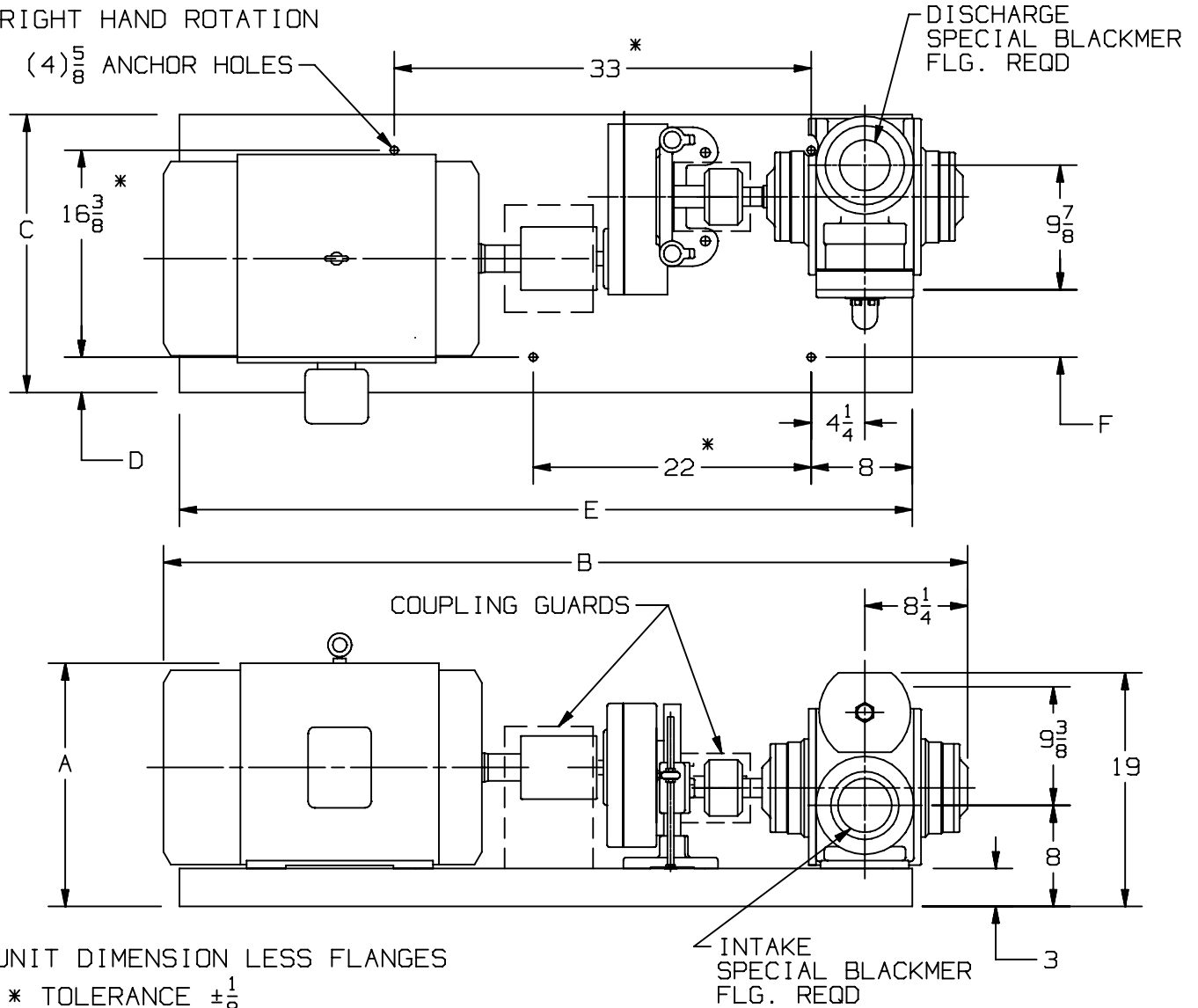
MOTOR			UNITS	DIMENSIONS									
FRAME SIZE				A	B	C	D	E	F	G	H	J	K
			IN	1 1/2	3/8	2 7/8	11	8 1/8	4 1/2	7	5/8	8	9 1/2
			MM	38,1	9,5	73	279,4	206,4	114,3	177,8	15,9	203,2	241,3
				L	M	N	P	Q	R	S	T	U	V
			IN	5/8	6 3/8	5	14 3/8	15 1/2	—	10 1/8	6 3/8	7 3/8	2 1/2
			MM	15,9	161,9	127	365,1	393,7	—	257,2	161,9	187,3	63,5
				W	X	Y	Z	AA	BB	CC	DD		WEIGHT WITHOUT FLANGES
			IN	1 3/8	3	—	—	—	—	—	—	LBS	275
			MM	34,93	76,2	—	—	—	—	—	—	KG	124,7

NOTE: FOR ANSI AND DIN FLANGE DIMENSIONS, SEE DIMENSION SHEET 101-113

TYPE	SIZE	UNIT STYLE
X	4B	HRB

DIMENSIONS 101-112	
Section	101
Effective	February 2003
Replaces	March 2000
Page 2 / 3	

RIGHT HAND ROTATION



UNIT DIMENSION LESS FLANGES

* TOLERANCE $\pm \frac{1}{8}$

TOLERANCE ON OTHER DIMENSIONS $\pm \frac{1}{4}$

"A" DIMENSION LESS EYEBOLT

FLG. HT: 4" NPT - 1 $\frac{3}{8}$
4" WELD - 3

FRAME SIZE	MOTOR	BASE NO.	DIMENSIONS					
			A	B	C	D	E	F
213T		901591	14 $\frac{3}{8}$	55 $\frac{3}{4}$	20 $\frac{3}{8}$	2	50 $\frac{1}{2}$	4 $\frac{1}{2}$
215T		901591	14 $\frac{3}{8}$	55 $\frac{3}{4}$	20 $\frac{3}{8}$	2	50 $\frac{1}{2}$	4 $\frac{1}{2}$
254T		901591	16 $\frac{3}{8}$	57 $\frac{1}{4}$	20 $\frac{3}{8}$	2	50 $\frac{1}{2}$	4 $\frac{1}{2}$
256T		901591	16 $\frac{3}{8}$	58 $\frac{7}{8}$	20 $\frac{3}{8}$	2	50 $\frac{1}{2}$	4 $\frac{1}{2}$
284T		901592	18	63 $\frac{1}{4}$	22	2 $\frac{7}{8}$	58	5 $\frac{3}{8}$
286T		901592	18	63 $\frac{1}{4}$	22	2 $\frac{7}{8}$	58	5 $\frac{3}{8}$
324T		901592	20	64 $\frac{5}{8}$	22	2 $\frac{7}{8}$	58	5 $\frac{3}{8}$
326T		901592	20	66 $\frac{1}{8}$	22	2 $\frac{7}{8}$	58	5 $\frac{3}{8}$

DIMENSIONS 101-112

Section 101
 Effective February 2003
 Replaces March 2000
 Page 3/3

TYPE

SIZE

UNIT
 STYLE

X

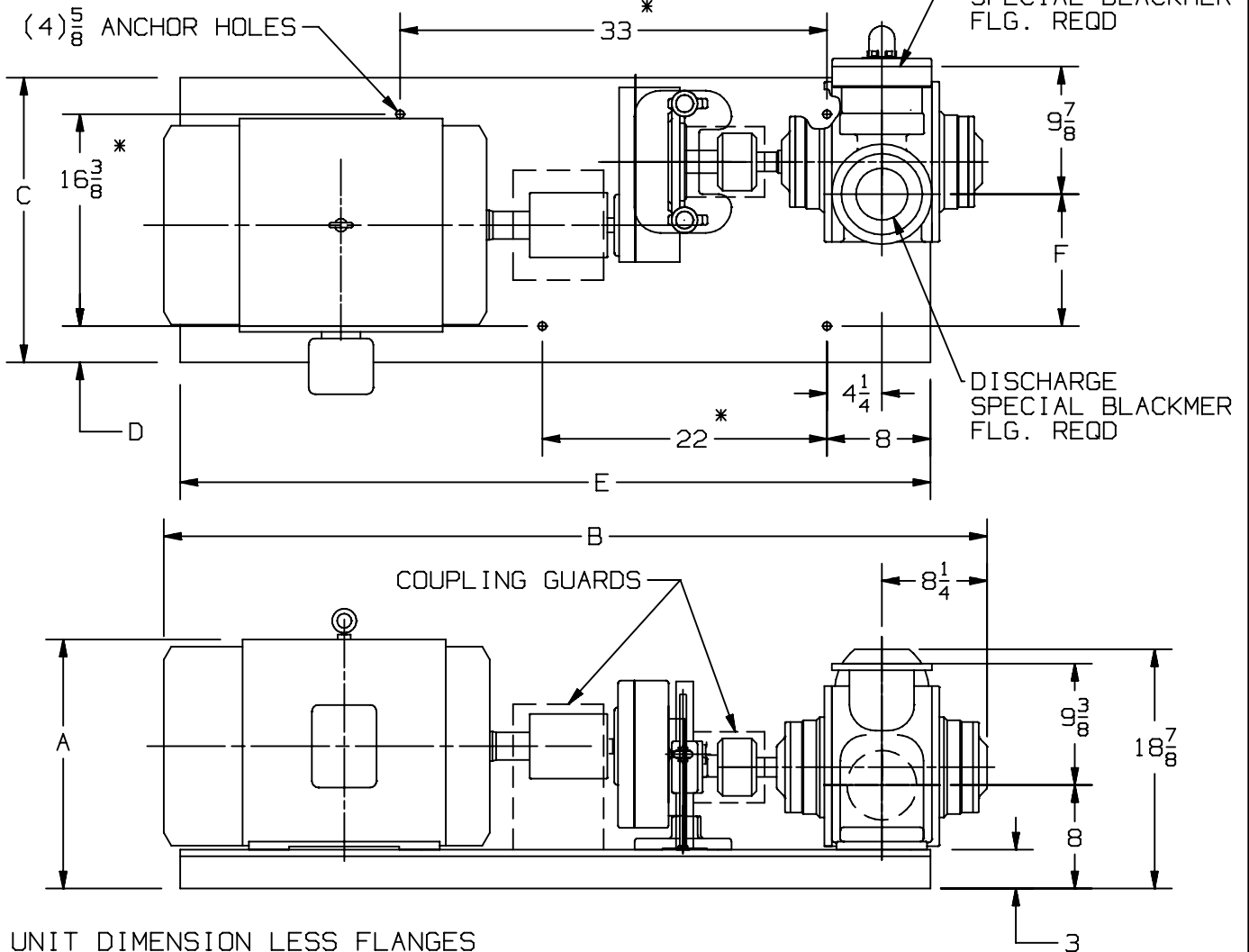
4B

HRB



www.blackmer.com

LEFT HAND ROTATION



UNIT DIMENSION LESS FLANGES

* TOLERANCE ± 1/8

TOLERANCE ON OTHER DIMENSIONS ± 1/4

"A" DIMENSION LESS EYEBOLT

FLG. HT: 4" NPT - 1 3/8
 4" WELD - 3

FRAME SIZE	MOTOR	BASE NO.	DIMENSIONS					
			A	B	C	D	E	F
213T		901591	14 3/8	55 5/8	20 3/8	2	50 1/2	9 3/8
215T		901591	14 3/8	55 5/8	20 3/8	2	50 1/2	9 3/8
254T		901591	16 3/8	57 1/8	20 3/8	2	50 1/2	9 3/8
256T		901591	16 3/8	58 3/4	20 3/8	2	50 1/2	9 3/8
284T		901592	18	63 1/8	22	2 13/16	58	9 7/8
286T		901592	18	63 1/8	22	2 13/16	58	9 7/8
324T		901592	20	64 1/2	22	2 13/16	58	9 7/8
326T		901592	20	66	22	2 13/16	58	9 7/8